



HAL
open science

Checklist of the marine fishes from metropolitan France

Philippe Béarez, Patrice Pruvost, Eric Feunteun, Samuel P. Iglesias, Patrice Francour, Romain Causse, Jeanne de Mazieres, Sandrine Tercerie, Nicolas Bailly

► To cite this version:

Philippe Béarez, Patrice Pruvost, Eric Feunteun, Samuel P. Iglesias, Patrice Francour, et al.. Checklist of the marine fishes from metropolitan France. *Cybium : Revue Internationale d'Ichtyologie*, 2017, 41 (4), pp.351 - 371. 10.26028/cybium/2017-414-006 . mnhn-02921938

HAL Id: mnhn-02921938

<https://mnhn.hal.science/mnhn-02921938>

Submitted on 26 Apr 2022

HAL is a multi-disciplinary open access archive for the deposit and dissemination of scientific research documents, whether they are published or not. The documents may come from teaching and research institutions in France or abroad, or from public or private research centers.

L'archive ouverte pluridisciplinaire **HAL**, est destinée au dépôt et à la diffusion de documents scientifiques de niveau recherche, publiés ou non, émanant des établissements d'enseignement et de recherche français ou étrangers, des laboratoires publics ou privés.



Distributed under a Creative Commons Attribution 4.0 International License

Checklist of the marine fishes from metropolitan France

by

Philippe BÉAREZ* (1, 8), Patrice PRUVOST (2), Éric FEUNTEUN (2, 3, 8), Samuel IGLÉSIAS (2, 4, 8),
Patrice FRANCOUR (5), Romain CAUSSE (2, 8), Jeanne DE MAZIERES (6),
Sandrine TERCERIE (6) & Nicolas BAILLY (7, 8)



© SFI
Received: 4 Jul. 2017
Accepted: 21 Nov. 2017
Editor: G. Duhamel

Abstract. – A list of the marine fish species occurring in the French EEZ was assembled from more than 200 references. No updated list has been published since the 19th century, although incomplete versions were available in several biodiversity information systems. The list contains 729 species distributed in 185 families. It is a preliminary step for the Atlas of Marine Fishes of France that will be further elaborated within the INPN (the National Inventory of the Natural Heritage: <https://inpn.mnhn.fr>).

Résumé. – Liste des poissons marins de France métropolitaine.

Une liste des poissons marins se trouvant dans la Zone Économique Exclusive de France a été constituée à partir de plus de 200 références. Cette liste n'avait pas été mise à jour formellement depuis la fin du 19^e siècle, bien que des versions incomplètes existent dans plusieurs systèmes d'information sur la biodiversité. La liste contient 729 espèces réparties dans 185 familles. C'est une étape préliminaire pour l'Atlas des Poissons marins de France qui sera élaboré dans le cadre de l'INPN (Inventaire National du Patrimoine Naturel : <https://inpn.mnhn.fr>).

Key words

Marine fishes
Northeast Atlantic
Mediterranean Sea
Metropolitan France
Taxonomic list

No recent faunistic work covers the fish species present only in the marine waters of the French Exclusive Economic Zone (EEZ) in Europe, contrary to the continental waters (Keith *et al.*, 2011).

Since Gervais and Boulart (1876-1877) and Moreau (1881), French ichthyologists have considered with some reasons that a list of the marine fishes of France would present no interest from a zoogeographic point view, and that only an European list or an Atlantic list versus a Mediterranean list would be relevant (J.C. Hureau, pers. comm.). Hence, they were much involved in the publication of the CLOFNAM (Check-List of the Fishes of the North-eastern Atlantic and the Mediterranean) (Hureau and Monod, 1973-1979), and its subsequent fauna, the FNAM (Fishes of the North-eastern Atlantic and the Mediterranean) (Whitehead *et al.*, 1984-1986). This remains the case for the most recent field guides

(*e.g.* Quéro *et al.*, 2003; Louisy, 2015), in which the entire Europe is considered (Atlantic only for the former).

However, the Convention on Biological Diversity (United Nations, 1992) that France signed on 13 June 1992, ratified on 10 June 1994 (Loi n° 94-477 du 10 juin 1994¹) and set up in application since 29 September 1994 (Décret n° 95-140 du 6 février 1995²), requests that countries identify the components of their biological diversity, such as species and communities, important for its conservation and sustainable use. France meets this commitment by developing inventories of species, which is an objective transposed in the national Environment Code. The article L411-1A establishes a national inventory of natural heritage (Inventaire National du Patrimoine Naturel, INPN) including the

¹ <https://www.legifrance.gouv.fr/affichTexte.do?cidTexte=JORFT EXT000000731610>

² <https://www.legifrance.gouv.fr/affichTexte.do?cidTexte=JORFT EXT000000734825>

- (1) Archéozoologie, archéobotanique : sociétés, pratiques et environnements (AASPE UMR 7209), Sorbonne Universités, Muséum national d'Histoire naturelle, CNRS, 55 rue Buffon, CP 56, 75005 Paris, France. [bearez@mnhn.fr]
- (2) Biologie des Organismes et Écosystèmes Aquatiques (BOREA UMR 7208), Sorbonne Universités, Muséum national d'Histoire naturelle, Université Pierre et Marie Curie, Université de Caen Normandie, Université des Antilles, CNRS, IRD, 43 rue Cuvier, CP 26, 75005 Paris, France. [pruvost@mnhn.fr] [causse@mnhn.fr]
- (3) MNHN – Station Marine de Dinard, Centre de Recherche et d'Enseignement Sur les Systèmes Côtiers (CRESCO), 38 rue du Port Blanc, 35800 Dinard, France. [feunteun@mnhn.fr]
- (4) MNHN – Station Marine de Concarneau, Place de la Croix, BP 225, 29182 Concarneau Cedex, France. [iglesias@mnhn.fr]
- (5) Ecosystèmes Côtiers Marins et Réponses aux Stress (ECOMERS FRE 3729), Université Côte d'Azur, CNRS, 28 avenue Valrose, BP 71, 06108 Nice CEDEX 2, France. [patrice.francoeur@unice.fr]
- (6) UMS 2006 Patrimoine Naturel, Muséum national d'Histoire naturelle, 36 rue Geoffroy-Saint-Hilaire, 75005 Paris, France. [jdemazieres@mnhn.fr] [tercerie@mnhn.fr]
- (7) FishBase Information and Research Group, c/o IIRRI, Khush Hall, Los Baños, 4031 Laguna, Philippines. [n.bailly@fin.ph]
- (8) Société Française d'Ichtyologie, Muséum national d'Histoire naturelle, 43 rue Cuvier, 75005 Paris, France.

* Corresponding author [bearez@mnhn.fr]

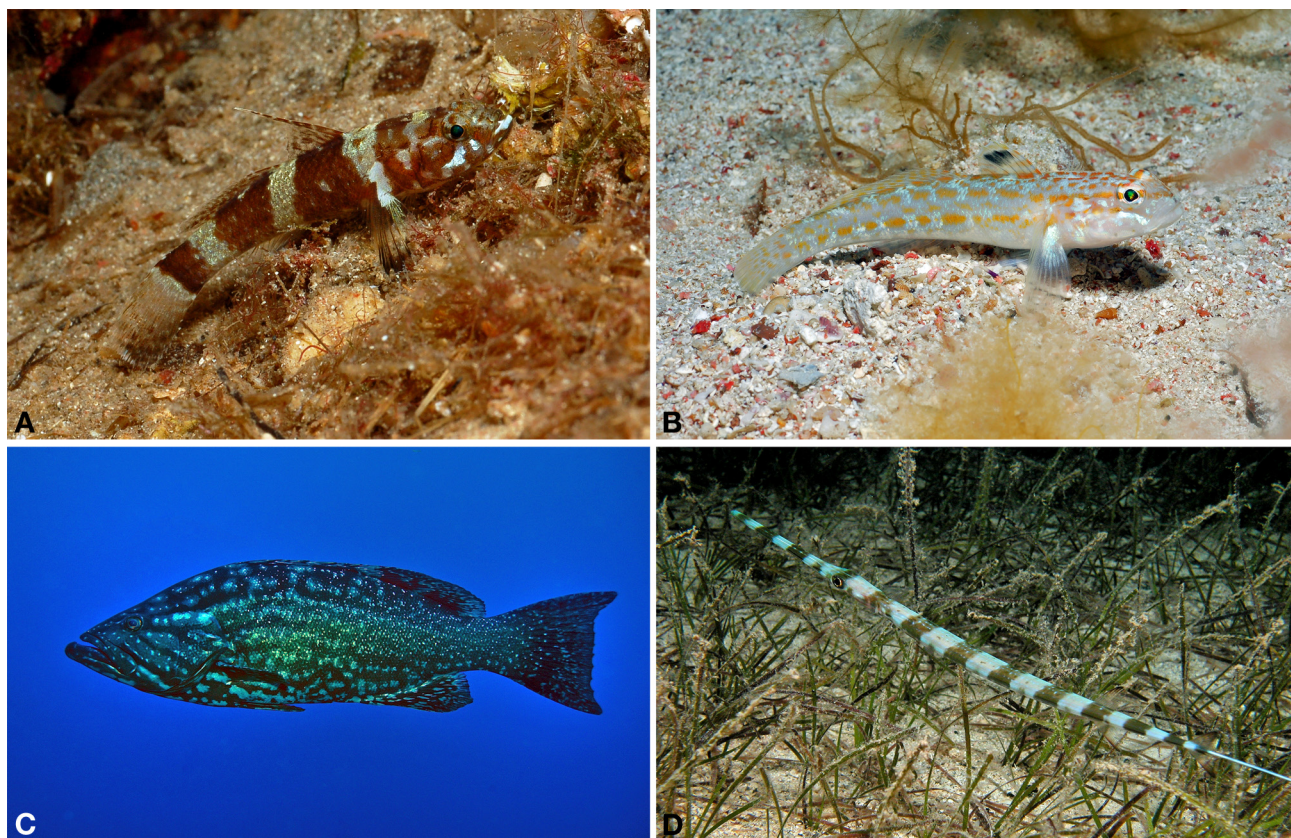


Figure 1. – Original pictures of some interesting records from the French Mediterranean (© P. Francour). **A:** *Didogobius splechnai* (Scandola, 25 m), a rare species in France. **B:** *Gobius kolombatovici* (Scandola, 50 m), a recently described species. **C:** *Mycteroperca rubra* (Scandola, 15 m), an uncommon species mainly found in Corsica. **D:** *Fistularia commersonii*: a newcomer in the Mediterranean.

biological and geological diversity of metropolitan France and its overseas territories. The INPN is carried out under the MNHN scientific responsibility with multiple nature stakeholders and is made available to the public through its Website (inpn.mnhn.fr).

This checklist of marine fish species was developed in the framework of the INPN as a preliminary step to establish and publish an Atlas of Marine Fishes of metropolitan France. Due to the importance of fishes for the fisheries including discards, fish farming, diving and game fishing, in the economy of the country, and for the ecological status assessment of marine waters for the Marine Strategy Framework Directive, a complete list of species, taking into account newly recorded and described species (Fig. 1), also seemed to be recommended.

The following checklist is intended to provide a national reference list that will be updated with new records in the future.

MATERIAL AND METHODS

The checklist presented herein covers the marine waters of the French metropolitan Economic Exclusive Zone (EEZ) off the coast bordering the Northeast Atlantic Ocean, including the Channel and the North Sea, and the Mediterranean Sea, including Corsica (Fig. 2). This excludes the French overseas territories.

All French fishes belonging to the subphylum Vertebrata were considered, including Myxini, Petromyzonti, Elasmobranchii, Holocephali and Actinopterygii (Eschmeyer *et al.*, 2017).

The first objective was to establish a list of species objectively recorded in the French EEZ, that means specimens either cited in scientific publications or present in fish collections, based on all available historical data. For this, we first compared a primary list extracted from FishBase (Froese and Pauly, 2017), which included more than 560 species known to occur in the French EEZ, with the list issued from the national taxonomic register TAXREF v10.0 (Gargominy *et al.*, 2016). The list for European waters in FishBase was mainly updated from the list of fishes in the European Register of Marine Species (Van der Land *et al.*, 2001).

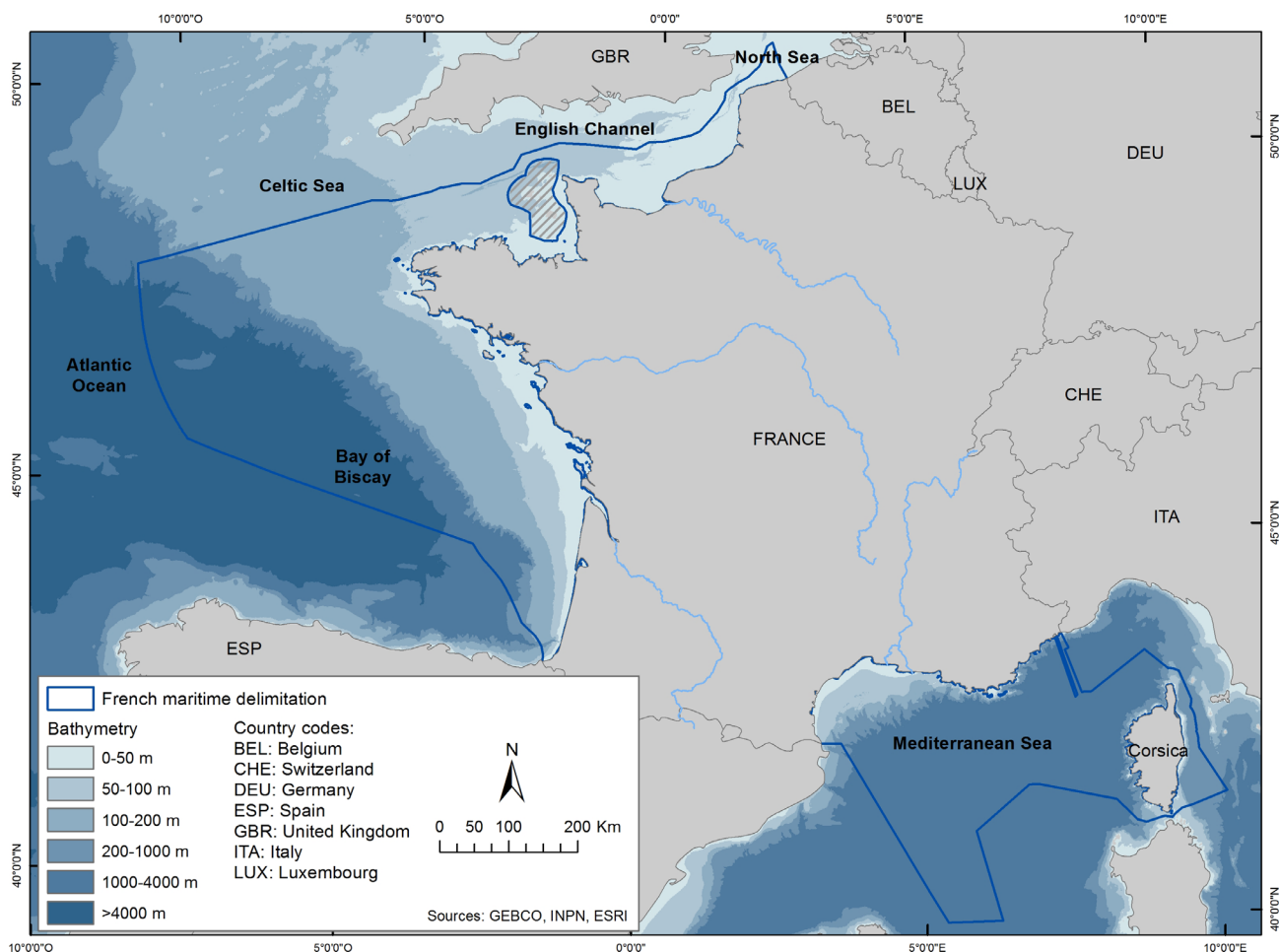


Figure 2. – Map of the study area with delimitation of the French economic exclusive zone (EEZ).

We then looked for objective records for all these species. Some uncommon or rare species known from a few specimens in the Northeast Atlantic, or the Mediterranean Sea but with no records from French EEZ, were not considered. To complete this drafting list, we considered the records of specimens captured in the study area and deposited in the fish collections of the Muséum national d’Histoire naturelle, Paris and all museums in France registered in GICIM (Gestion Informatisée des Collections Ichtyologiques des Musées d’histoire naturelle de France).

We also considered other web resources such as the GBIF (Global Biodiversity Information Facility) using a Geographical Information System (QGIS 2.10) to select all the potential species observed in the EEZ area extended by 110 km (ca 470 km off the coast in total). The 188 uncovered species were checked in the literature resulting in the addition of 46 species to the previous list.

The report of the Ifremer surveys (Trenkel *et al.*, 2009) was also consulted, allowing us to add five more species to the checklist. We also considered regional and local checklists as well as many useful other regional publications. In

total, more than 200 books, articles and taxonomic revisions were consulted (the list of these references is available at <http://sfi-cybiuim.fr/fr/checklist-marine-fishes-metropolitan-france>).

We followed Van der Laan *et al.* (2017) for family-group names and the Catalog of Fishes (Eschmeyer *et al.*, 2017) for the scientific nomenclature and classification. Within each family, species were sorted alphabetically.

For each species, we provide English and French common names according to the FAO, the Aquatic Science and Fisheries Information System (ASFIS), or Quéro *et al.* (2003) when available. Several non-commercial species, without available common names, were given a new common name.

We do not consider subspecies anymore. Subspecies that were regarded as valid in most of the latest publications were elevated at species rank (*e.g. Trachyscorpia cristulata echinata* is listed as *Trachyscorpia echinata*). In case of doubtful validity, subspecies were synonymised with their nominal species, which was already done in the Catalog of Fishes and FishBase.

RESULTS

We obtained a consolidated list of 729 marine fish species with objective reports of presence in the French EEZ, distributed in 185 families and 458 genera as indicated in table I.

Table I. – Number of orders, families, genera and species of fish from metropolitan France.

Order	Families	Genera	Species
Myxiniiformes	1	1	1
Petromyzontiformes	1	2	2
Hexanchiformes	2	3	4
Lamniformes	5	8	9
Carcharhiniiformes	6	10	23
Squaliformes	7	12	20
Squatiniiformes	1	1	3
Torpediniiformes	1	2	3
Rhinopristiformes	3	3	4
Rajiformes	2	8	24
Myliobatiformes	5	8	9
Chimaeriformes	2	4	7
Acipenseriformes	1	1	1
Elopiformes	1	1	1
Notacanthiformes	2	4	6
Anguilliformes	9	20	21
Saccopharyngiformes	1	1	1
Clupeiformes	2	6	8
Osmeriformes	7	28	35
Salmoniformes	1	1	2
Stomiiformes	4	21	32
Ateleopodiformes	1	1	1
Aulopiformes	11	16	20
Myctophiformes	2	18	34
Lampriformes	4	5	6
Gadiformes	7	32	54
Ophidiiformes	4	11	14
Batrachoidiformes	1	1	1
Lophiiformes	4	5	7
Gobiesociformes	1	5	8
Atheriniiformes	1	1	3
Beloniformes	3	6	9
Stephanoberyciformes	1	2	4
Beryciformes	3	3	6
Cetomimiformes	1	1	1
Zeiformes	4	6	6
Gasterosteiformes	1	3	3
Syngnathiformes	3	6	14
Scorpaeniformes	10	20	30
Perciformes	49	142	249
Pleuronectiformes	6	23	37
Tetraodontiformes	4	6	6

Non-indigenous species, for which we have rare or occasional evidence in the French EEZ, are indicated with an asterisc.

Brackish and freshwater species that only enter sporadically the marine biota, that we defined as haline waters (salinity > 30 PSU), are listed in the Annex. For more details on these species, see Keith *et al.* (2011).

These results will be available and downloadable on the INPN website (<https://inpn.mnhn.fr/programme/referentiel-taxonomique-taxref>) in the next version of the national taxonomic register TAXREF v11.0 expected at the end of 2017.

CLASS MYXINI**Order MYXINIFORMES****Family Myxinidae**

Myxine glutinosa Linnaeus, 1758 – Hagfish – Myxine

CLASS PETROMYZONTI**Order PETROMYZONTIFORMES****Family Petromyzontidae**

Lampetra fluviatilis (Linnaeus, 1758) – River lamprey – Lamproie de rivière

Petromyzon marinus Linnaeus, 1758 – Sea lamprey – Lamproie marine

CLASS ELASMOBRANCHII**Order HEXANCHIFORMES****Family Hexanchidae**

Heptranchias perlo (Bonnaterre, 1788) – Sharpnose sevengill shark – Requin perlon

Hexanchus griseus (Bonnaterre, 1788) – Bluntnose sixgill shark – Requin griset

**Hexanchus nakamurai* Teng, 1962 – Bigeyed sixgill shark – Requin vache

Family Chlamydoselachidae

Chlamydoselachus anguineus Garman, 1884 – Frilled shark – Requin lézard

Order LAMNIFORMES**Family Odontaspidae**

Carcharias taurus Rafinesque, 1810 – Sand tiger shark – Requin taureau

Odontaspis ferox (Risso, 1810) – Smalltooth sand tiger – Requin féroce

Family Mitsukurinidae

Mitsukurina owstoni Jordan, 1898 – Goblin shark – Requin lutin

Family Lamnidae

Carcharodon carcharias (Linnaeus, 1758) – Great white shark – Grand requin blanc

Isurus oxyrinchus Rafinesque, 1810 – Shortfin mako – Taupe bleu

Lamna nasus (Bonnaterre, 1788) – Porbeagle – Requin-taupe commun

Family Cetorhinidae

Cetorhinus maximus (Gunnerus, 1765) – Basking shark – Pèlerin

Family Alopiidae

Alopias superciliosus Lowe, 1841 – Bigeye thresher – Renard à gros yeux

Alopias vulpinus (Bonnaterre, 1788) – Thresher – Renard

Order CARCHARHINIFORMES

Family Pentanchidae

Apristurus aphyodes Nakaya & Stehmann, 1998 – White ghost catshark – Holbiche spectre

Apristurus laurussonii (Saemundsson, 1922) – Iceland catshark – Holbiche d'Islande

Apristurus melanoasper Iglésias, Nakaya & Stehmann, 2004 – Black roughscale catshark – Holbiche noire

Apristurus profundorum (Goode & Bean, 1896) – Deep-water catshark – Holbiche papoila

Galeus melastomus Rafinesque, 1810 – Blackmouth catshark – Chien espagnol

Galeus murinus (Collett, 1904) – Mouse catshark – Chien islandais

Family Scyliorhinidae

Scyliorhinus canicula (Linnaeus, 1758) – Smallspotted catshark – Petite roussette

Scyliorhinus stellaris (Linnaeus, 1758) – Nursehound – Grande roussette

Family Pseudotriakidae

Pseudotriakis microdon de Brito Capello, 1868 – False catshark – Requin à longue dorsale

Family Triakidae

Galeorhinus galeus (Linnaeus, 1758) – Tope shark – Requin-hâ

Mustelus asterias Cloquet, 1819 – Starry smooth-hound – Émissole tachetée

Mustelus mustelus (Linnaeus, 1758) – Smooth-hound – Émissole lisse

Mustelus punctulatus Risso, 1827 – Blackspotted smooth-hound – Émissole pointillée

Family Carcharhinidae

Carcharhinus brachyurus (Günther, 1870) – Copper shark – Requin cuivre

Carcharhinus brevipinna (Valenciennes, 1839) – Spinner shark – Requin tisserand

Carcharhinus limbatus (Valenciennes, 1839) – Blacktip shark – Requin bordé

Carcharhinus obscurus (Lesueur, 1818) – Dusky shark – Requin de sable

Carcharhinus plumbeus (Nardo, 1827) – Sandbar shark – Requin gris

**Galeocerdo cuvier* (Péron & Lesueur, 1822) – Tiger shark – Requin tigre

Prionace glauca (Linnaeus, 1758) – Blue shark – Peau bleue

Family Sphyrnidae

Sphyrna lewini (Griffith & Smith, 1834) – Scalloped hammerhead – Requin-marteau halicorne

Sphyrna tudes (Valenciennes, 1822)³ – Smalleye hammerhead – Requin-marteau à petits yeux

Sphyrna zygaena (Linnaeus, 1758) – Smooth hammerhead – Requin-marteau commun

Order SQUALIFORMES

Family Dalatiidae

Dalatias licha (Bonnaterre, 1788) – Kitefin shark – Squale liche

Squaliolus laticaudus Smith & Radcliffe, 1912 – Spined pygmy shark – Squale nain

Family Etmopteridae

Etmopterus princeps Collett, 1904 – Great lanternshark – Sagre rude

Etmopterus pusillus (Lowe, 1839) – Smooth lanternshark – Sagre nain

Etmopterus spinax (Linnaeus, 1758) – Velvet belly lantern shark – Sagre commun

Family Somniosidae

Centroscymnus coelolepis Barbosa du Bocage & de Brito Capello, 1864 – Portuguese dogfish – Pailona commun

Centroselachus crepidater (Barbosa du Bocage & de Brito Capello, 1864) – Longnose velvet dogfish – Pailona à long nez

Scymnodon ringens Barbosa du Bocage & de Brito Capello, 1864 – Knifetooth dogfish – Squale-grogneur commun

Somniosus microcephalus (Bloch & Schneider, 1801) – Greenland shark – Laimargue du Groenland

Somniosus rostratus (Risso, 1827) – Little sleeper shark – Laimargue de Méditerranée

Family Oxynotidae

Oxynotus centrina (Linnaeus, 1758) – Angular roughshark – Centrine commune

Oxynotus paradoxus Frade, 1929 – Sailfin roughshark – Humantin

Family Centrophoridae

Centrophorus granulosus (Bloch & Schneider, 1801) – Gulper shark – Squale-chagrin commun

Centrophorus squamosus (Bonnaterre, 1788) – Leafscale gulper shark – Squale-chagrin de l'Atlantique

Deania calcea (Lowe, 1839) – Birdbeak dogfish – Squale savate

Deania profundorum (Smith & Radcliffe, 1912) – Arrowhead dogfish – Squale-savate lutin

³ Most probably extinct in the French Mediterranean.

Family Squalidae

- Squalus acanthias* Linnaeus, 1758 – Piked dogfish –
Aiguillat commun
- Squalus blainville* (Risso, 1827) – Longnose spurdog –
Aiguillat coq
- Squalus uyato* Rafinesque, 1810 – Little gulper shark – Petit
squale-chagrin

Family Echinorhinidae

- Echinorhinus brucus* (Bonnatere, 1788) – Bramble shark –
Squale bouclé

ORDER SQUATINIFORMES**Family Squatinidae**

- Squatina aculeata* Cuvier, 1829⁴ – Sawback angelshark –
Ange de mer épineux
- Squatina oculata* Bonaparte, 1840 – Smoothback angelshark
– Ange de mer ocellé
- Squatina squatina* (Linnaeus, 1758) – Angelshark – Ange de
mer commun

Order TORPEDINIFORMES**Family Torpedinidae**

- Tetronarce nobiliana* (Bonaparte, 1835) – Atlantic torpedo –
Torpille noire
- Torpedo torpedo* (Linnaeus, 1758) – Common torpedo –
Torpille ocellée
- Torpedo marmorata* Risso, 1810 – Marbled torpedo –
Torpille marbrée

Order RHINOPRISTIFORMES**Family Rhinobatidae**

- Rhinobatos rhinobatos* (Linnaeus, 1758) – Common
guitarfish – Raie-guitare commune

Family Glaucostegidae

- Glaucostegus cemiculus* (Geoffroy Saint-Hilaire, 1817) –
Blackchin guitarfish – Raie-guitare fousseuse

Family Pristidae

- Pristis pristis* (Linnaeus, 1758)⁵ – Common sawfish –
Poisson-scie commun
- Pristis pectinata* Latham, 1794⁶ – Smalltooth sawfish –
Poisson-scie tident

Order RAJIFORMES**Family Arhynchobatidae**

- Bathyraja pallida* (Forster, 1967) – Pale ray – Raie pâle
- Bathyraja richardsoni* (Garrick, 1961) – Richardson's ray –
Raie de Richardson

Family Rajidae

- Amblyraja radiata* (Donovan, 1808) – Starry ray – Raie
radiée
- Dipturus batis* (Linnaeus, 1758) – Blue skate – Pocheteau
gris
- Dipturus intermedius* (Parnell, 1837) – Intermediate skate –
Pocheteau intermédiaire
- Dipturus nidarosiensis* (Storm, 1881) – Norwegian skate –
Pocheteau de Norvège
- Dipturus oxyrinchus* (Linnaeus, 1758) – Longnose skate –
Pocheteau noir
- Leucoraja circularis* (Couch, 1838) – Sandy ray – Raie
circulaire
- Leucoraja fullonica* (Linnaeus, 1758) – Shagreen ray – Raie
chardon
- Leucoraja naevus* (Müller & Henle, 1841) – Cuckoo ray –
Raie fleurie
- Neoraja caerulea* (Stehmann, 1976) – Blue ray – Raie bleue
- Raja asterias* Delaroche, 1809 – Starry ray – Raie étoilée
- Raja brachyura* Lafont, 1873 – Blonde ray – Raie lisse
- Raja clavata* Linnaeus, 1758 – Thornback ray – Raie
bouclée
- Raja microocellata* Montagu, 1818 – Small-eyed ray – Raie
mêlée
- Raja miraletus* Linnaeus, 1758 – Brown ray – Raie-miroir
- Raja montagui* Fowler, 1910 – Spotted ray – Raie douce
- Raja polystigma* Regan, 1923 – Speckled ray – Raie
tachetée
- Raja radula* Delaroche, 1809 – Rough ray – Raie râpe
- Raja undulata* Lacepède, 1802 – Undulate ray – Raie
brunette
- Rajella bigelowi* (Stehmann, 1978) – Bigelow's ray – Raie à
ventre noir
- Rajella fyllae* (Lütken, 1887) – Round ray – Raie ronde
- Rajella kukujevi* (Dolganov, 1985) – Mid-Atlantic skate –
Raie pâlotte
- Rostroraja alba* (Lacepède, 1803) – White skate – Raie
blanche

Order MYLIOBATIFORMES**Family Dasyatidae**

- Bathytoshia centroura* (Mitchill, 1815) – Roughtail stingray
– Pastenague épineuse
- Dasyatis pastinaca* (Linnaeus, 1758) – Common stingray –
Pastenague commune
- Dasyatis tortonesei* Capapé, 1975 – Tortonese's stingray –
Pastenague de Tortonese
- Pteroplatytrygon violacea* (Bonaparte, 1832) – Pelagic
stingray – Pastenague violette

Family Gymnuridae

- Gymnura altavela* (Linnaeus, 1758) – Spiny butterfly ray –
Raie-papillon épineuse

⁴ Most probably extinct in the French Mediterranean.

⁵ Most probably extinct in the French Mediterranean.

⁶ Most probably extinct in the French Mediterranean.

Family Myliobatidae

Myliobatis aquila (Linnaeus, 1758) – Common eagle ray –
Aigle commun

Aetomylaeus bovinus (Geoffroy Saint-Hilaire, 1817) – Bull
ray – Aigle vachette

Family Rhinopteridae

Rhinoptera marginata (Geoffroy Saint-Hilaire, 1817) –
Lusitanian cownose ray – Mourine lusitanienne

Family Mobulidae

Mobula mobular (Bonnaterre, 1788) – Devil ray – Mante

CLASS HOLOCEPHALI**Order CHIMAERIFORMES****Family Rhinochimaeridae**

Harriotta raleighana Goode & Bean, 1895 – Narrownose
chimaera – Chimère de Raleigh

Rhinochimaera atlantica Holt & Byrne, 1909 – Spearnose
chimaera – Chimère à nez mou

Family Chimaeridae

Chimaera monstrosa Linnaeus, 1758 – Rabbit fish –
Chimère commune

Chimaera opalescens Luchetti, Iglésias & Sellos, 2011 –
Opale chimaera – Chimère opale

Hydrolagus affinis (de Brito Capello, 1868) – Smalleyed
rabbitfish – Chimère à petits yeux

Hydrolagus mirabilis (Collett, 1904) – Large-eyed rabbitfish
– Chimère à gros yeux

Hydrolagus pallidus Hardy & Stehmann, 1990 – Pale
rabbitfish – Chimère pâle

CLASS ACTINOPTERYGII**Order ACIPENSERIFORMES****Family Acipenseridae**

Acipenser sturio Linnaeus, 1758 – Sturgeon – Esturgeon

Order ELOPIFORMES**Family Megalopidae**

**Megalops atlanticus* Valenciennes, 1847 – Tarpon – Tarpon
atlantique

Order NOTACANTHIFORMES**Family Halosauridae**

Halosaurus macrochir (Günther, 1878) – Abyssal
halosaur – Halosaure rayé

Halosaurus johnsonianus Vaillant, 1888 – Halosaur –
Halosaure

Family Notacanthidae

Notacanthus bonaparte Risso, 1840 – Shortfin spiny eel –
Poisson-tapir clair

Notacanthus chemnitzii Bloch, 1788 – Snubnosed spiny eel
– Poisson-tapir à grandes écailles

Polyacanthonotus challengeri (Vaillant, 1888) – Longnose
tapirfish – Poisson-tapir épineux

Polyacanthonotus rissoanus (De Filippi & Verany, 1857) –
Smallmouth spiny eel – Poisson-tapir à petites épines

Order ANGUILLIFORMES**Family Synphobranchidae**

Simenchelys parasitica Gill, 1879 – Snubnosed eel –
Anguille à nez court

Synphobranchus kaupii Johnson, 1862 – Kaup's
arrowtooth eel – Anguille égorgée

Family Muraenidae

**Anarchias longicauda* (Peters, 1877) – Pygmy moray –
Murène pygmée

Gymnothorax unicolor (Delaroche, 1809) – Brown moray –
Murène brune

Muraena helena Linnaeus, 1758 – Mediterranean moray –
Murène de Méditerranée

Family Derichthyidae

Derichthys serpentinus Gill, 1884 – Narrownecked oceanic
eel – Fouet petit-nez

Nessorhamphus ingolfianus (Schmidt, 1912) – Duckbill
oceanic eel – Fouet long-nez

Family Ophichthidae

Apterichthys anguiformis (Peters, 1877) – Slender finless eel
– Anguille-serpent à bouche noire

Apterichthys caecus (Linnaeus, 1758) – European finless eel
– Anguille-serpent aptère

Dalophis imberbis (Delaroche, 1809) – Armless snake eel –
Serpenton imberbe

Echelus myrus (Linnaeus, 1758) – Painted eel – Serponton
miro

Ophichthus rufus (Rafinesque, 1810) – Rufus snake eel –
Serpenton jaune

Ophisurus serpens (Linnaeus, 1758) – Serpent eel –
Serpenton à long nez

**Pisodonophis semicinctus* (Richardson, 1848) – Saddled
snake eel – Serpenton à selles

Family Nettastomatidae

Nettastoma melanurum Rafinesque, 1810 – Blackfin
sorcerer – Sorcière à queue noire

Family Congridae

Ariosoma balearicum (Delaroche, 1809) – Bandtooth
conger – Congre des Baléares

Conger conger (Linnaeus, 1758) – European conger –
Congre d'Europe

Gnathophis mystax (Delaroche, 1809) – Thinlip conger –
Congre bec-fin

Family Nemichthyidae

Nemichthys scolopaceus Richardson, 1848 – Slender snipe
eel – Avocette ruban

Family Serrivomeridae

Serrivomer beanii Gill & Ryder, 1883 – Stout sawpalate –
Serrivomer trapu

Family Anguillidae

Anguilla anguilla (Linnaeus, 1758) – European eel –
Anguille d'Europe

Order SACCOPHARYNGIFORMES**Family Eurypharyngidae**

Eurypharynx pelecanoïdes Vaillant, 1882 – Pelican eel –
Grand-gousier pélican

Order CLUPEIFORMES**Family Clupeidae**

Alosa alosa (Linnaeus, 1758) – Hallis shad – Grande alose
Alosa fallax (Lacepède, 1803) – Twaite shad – Alose feinte
Clupea harengus Linnaeus, 1758 – Atlantic herring –
Hareng de l'Atlantique
Sardina pilchardus (Walbaum, 1792) – European pilchard –
Sardine commune
Sardinella aurita Valenciennes, 1847 – Round sardinella –
Allache
Sprattus sprattus (Linnaeus, 1758) – European sprat – Sprat
Family Engraulidae
Engraulis albidus Borsa, Collet & Durand, 2004 – White
anchovy – Anchois blanc
Engraulis encrasicolus (Linnaeus, 1758) – European
anchovy – Anchois

Order OSMERIFORMES**Family Argentinidae**

Argentina silus (Ascanius, 1775) – Greater argentine –
Grande argentine
Argentina sphyraena Linnaeus, 1758 – Argentine – Petite
argentine
Glossanodon leioglossus (Valenciennes, 1848) –
Smalltoothed argentine – Argentine à petites dents

Family Microstomatidae

Microstoma microstoma (Risso, 1810) – Slender argentine –
Serpe petite bouche
Nansenia oblita (Facciola, 1887) – Forgotten argentine –
Serpe oubliée

Family Bathylagidae

Bathylagichthys greyae (Cohen, 1958) – Grey's deepsea
smelt – Garcette de Grey
Bathylagus euryops Goode & Bean, 1896 – Goiter
blacksmelt – Garcette-goitre
Dolicholagus longirostris (Maul, 1948) – Longsnout
blacksmelt – Garcette pâle
Melanolagus bericoides (Borodin, 1929) – Bigscale deepsea
smelt – Garcette réticulée

Family Opisthopteroideae

Dolichopteryx longipes (Vaillant, 1888) – Brownsnout
spookfish – Revenant télescope
Opisthopterus soleatus Vaillant, 1888 – Barrel-eye –
Revenant nocturne

Family Alepocephalidae

Alepocephalus agassizii Goode & Bean, 1883 – Agassiz's
slickhead – Alépocéphale obscur
Alepocephalus bairdii Goode & Bean, 1879 – Baird's
slickhead – Alépocéphale de Baird
Alepocephalus productus Gill, 1883 – Smalleye smooth-
head – Alépocéphale émâcié
Alepocephalus rostratus Risso, 1820 – Risso's smooth-head
– Alépocéphale à bec
Bathytroctes microlepis Günther, 1878 – Smallscale
smooth-head – Cassigné gros œil
Conocara murrayi (Koefoed, 1927) – Murray's smooth-
head – Cassigné grosse tête
Leptoderma macrops Vaillant, 1886 – Grenadier smooth-
head – Cassigné grenadier
Narctes stomias (Gilbert, 1890) – Blackhead salmon –
Cassigné à tête noire
Photostylus pycnopterus Beebe, 1933 – Starry smooth-head
– Cassigné verruqueux
Rouleina attrita (Vaillant, 1888) – Softskin smooth-head –
Cassigné noir d'encre
Talismania antillarum (Goode & Bean, 1896) – Antillean
smooth-head – Cassigné ti-aile
Xenodermichthys copei (Gill, 1884) – Bluntnout smooth-
head – Gymnaste atlantique
Family Platytroutidae
Barbantus curvifrons (Roule & Angel, 1931) – Palebelly
searsid – Circé barbépine
Holtbyrnia anomala Krefft, 1980 – Bighead searsid – Circé
armé
Holtbyrnia macrops Maul, 1957 – Bigeye searsid – Circé
larne
Maulisia argipalla Matsui & Rosenblatt, 1979 – Palegold
searsid – Circé troué
Maulisia maui Parr, 1960 – Maul's searsid – Circé casqué
Maulisia microlepis Sazonov & Golovan, 1976 – Smallscale
searsid – Circé éteint
Mentodus rostratus (Günther, 1878) – Beaked searsid –
Circé barbe rude
Normichthys operosus Parr, 1951 – Multipore searsid –
Circé troué
Platytroutes apus Günther, 1878 – Legless searsid – Circé
élevé
Sagamichthys schnakenbecki (Krefft, 1953) –
Schnakenbeck's searsid – Circé svelte
Searsia koefoedi Parr, 1937 – Koefoed's searsid – Circé
commun
Family Osmeridae
Osmerus eperlanus (Linnaeus, 1758) – European smelt –
Éperlan européen

Order SALMONIFORMES**Family Salmonidae**

- Salmo salar* Linnaeus, 1758 – Atlantic salmon – Saumon de l'Atlantique
Salmo trutta Linnaeus, 1758 – Sea trout – Truite de mer

Order STOMIIFORMES**Family Gonostomatidae**

- Cyclothone acclinidens* Garman, 1899 – Benthooth bristlemouth – Cyclothone dentu
Cyclothone braueri Jespersen & Tåning, 1926 – Garrick – Cyclothone de Brauer
Cyclothone livida Brauer, 1902 – Livid bristlemouth – Cyclothone livide
Cyclothone microdon (Günther, 1878) – Veiled anglemouth – Cyclothone brun
Cyclothone pallida Brauer, 1902 – Tan bristlemouth – Cyclothone à ventre clair
Cyclothone pseudopallida Mukhacheva, 1964 – Slender bristlemouth – Cyclothone à crâne ponctué
Cyclothone pygmaea Jespersen & Tåning, 1926 – Pigmy bristlemouth – Cyclothone pygmée
Gonostoma denudatum Rafinesque, 1810 – Bigeye anglemouth – Gonostome gros œil
Sigmops bathyphilus (Vaillant, 1884) – Spark anglemouth – Gonostome noir
Sigmops elongatus (Günther, 1878) – Elongated bristlemouth – Gonostome à grandes dents

Family Sternoptychidae

- Argyropelecus hemigymnus* Cocco, 1829 – Half-naked hatchetfish – Hache d'argent grande queue
Argyropelecus olfersii (Cuvier, 1829) – Silver hatchetfish – Hache d'argent commune
Maurolicus muelleri (Gmelin, 1789) – Silvery lightfish – Brossé améthyste
Sternoptyx diaphana Hermann, 1781 – Diaphanous hatchet fish – Hache d'argent diaphane
Valenciennellus tripunctulatus (Esmark, 1871) – Constellationfish – Brossé petits feux

Family Phosichthyidae

- Polymetme corythaeola* (Alcock, 1898) – Plume lightfish – Luisant couronné
Polymetme thaeocoryla Parin & Borodulina, 1990 – Bright lightfish – Luisant grand feu
Vinciguerria attenuata (Cocco, 1838) – Slender lightfish – Luisant menton clair
Vinciguerria poweriae (Cocco, 1838) – Power's lightfish – Luisant nageoires claires

Family Stomiidae

- Aristostomias tittmanni* Welsh, 1923 – Loosejaw – Dragagodet blanche tête
Bathophilus nigerrimus Giglioli, 1882 – Scaleless dragonfish – Dragon irisé

- Borostomias abyssorum* (Köhler, 1896) – Abyssal snaggletooth – Ledémon abyssal
Borostomias antarcticus (Lönnerberg, 1905) – Snaggletooth – Ledémon double œil
Chauliodus sloani Bloch & Schneider, 1801 – Sloane's viperfish – Chauliode de Sloane
Chirostomias pliopterus Regan & Trewavas, 1930 – Branchedfin dragonfish – Dragon à nageoires ramifiées
Flagellostomias boureei (Zugmayer, 1913) – Longbarb dragonfish – Dragon à longue barbe
Grammatostomias flagellibarba Holt & Byrne, 1910 – Filamentousbarb dragonfish – Dragon à long filament
Malacosteus niger Ayres, 1848 – Spotlight loosejaw – Dragagodet imberbe
Melanostomias bartonbeani Parr, 1927 – Scaleless black dragonfish – Dragon à taches blanches
Rhadinesthes decimus (Zugmayer, 1911) – Slender snaggletooth – Dragon élancé
Stomias boa (Risso, 1810) – Boa dragonfish – Stomie commune
Trigonolampa miriceps Regan & Trewavas, 1930 – Threelight dragonfish – Dragon joue de feu

Order ATELEOPODIFORMES**Family Ateleopodidae**

- Ijimaia loppei* Roule, 1922 – Loppe's tadpole fish – Atéléopode de Loppe

Order AULOPIIFORMES**Family Aulopidae**

- Aulopus filamentosus* (Bloch, 1792) – Royal flagfin – Limbert royal

Family Chlorophthalmidae

- Chlorophthalmus agassizi* Bonaparte, 1840 – Shortnose greeneye – Éperlan du large

Family Ipnopidae

- Bathypterois dubius* Vaillant, 1888 – Mediterranean spiderfish – Poisson-trépied grand noir

Family Scopelarchidae

- Benthalbella infans* Zugmayer, 1911 – Zugmayer's pearleye – Œil-perlé à basse quille

Family Notosudidae

- Scopelosaurus lepidus* (Kreffft & Maul, 1955) – Blackfin waryfish – Guetteur à nageoire noire

Family Synodontidae

- Synodus saurus* (Linnaeus, 1758) – Atlantic lizardfish – Poisson-lézard rayé

Family Bathysauridae

- Bathysaurus ferox* Günther, 1878 – Deep-sea lizardfish – Bathysaure gris

Family Paralepididae

- Arctozenus risso* (Bonaparte, 1840) – Spotted barracudina – Barracudine pintade

Lestidiops affinis (Ege, 1930) – Barracudina – Barracudine claire
Lestidiops jayakari (Boulenger, 1889) – Pacific barracudina – Barracudine à dos tacheté
Lestidiops pseudosphyraenoides (Ege, 1918) – Atlantic barracudina – Barracudine atlantique
Lestidiops sphyrenoides (Risso, 1820) – Shorthead barracudina – Barracudine à petite tête
Macroparalepis affinis Ege, 1933 – Naked barracudina – Barracudine nue
Magnisudis atlantica (Krøyer, 1868) – Duckbill barracudina – Barracudine à grande bouche
Paralepis coregonoides Risso, 1820 – Sharpchin barracudina – Barracudine petit bec
Paralepis speciosa Bellotti, 1878 – Mediterranean barracudina – Barracudine de Méditerranée
Sudis hyalina Rafinesque, 1810 – Barracudina – Barracudine à longues pectorales

Family Anotopteridae

Anotopterus pharao Zugmayer, 1911 – Daggertooth – Pharaon

Family Evermannellidae

Evermannella balbo (Risso, 1820) – Balbo sabretooth – Poisson à dents de sabre de Balbo

Family Alepisauridae

Alepisaurus ferox Lowe, 1833 – Long snouted lancetfish – Lancier long-nez

Order MYCTOPHIFORMES

Family Neoscopelidae

Neoscopelus macrolepidotus Johnson, 1863 – Large-scaled lanternfish – Lanternon à grandes écailles

Scopelengys tristis Alcock, 1890 – Pacific blackchin – Lanternon à joue noire

Family Myctophidae

Benthoosema glaciale (Reinhardt, 1837) – Glacier lanternfish – Lanterne glaciaire

Bolinichthys indicus (Nafpaktitis & Nafpaktitis, 1969) – Smoothcheek lanternfish – Lanterne à joue lisse

Bolinichthys supralateralis (Parr, 1928) – Stubby lanternfish – Lanterne trapue

Ceratoscopelus maderensis (Lowe, 1839) – Madeira lanternfish – Lanterne de Madère

Diaphus effulgens (Goode & Bean, 1896) – Headlight lanternfish – Lanterne carrée

Diaphus holti Tåning, 1918 – Small lanternfish – Lanterne courte

Diaphus metopoclampus (Cocco, 1829) – Spthead lanternfish – Lanterne grosse tête

Diaphus rafinesquii (Cocco, 1838) – White-spotted lanternfish – Lanterne épaulette d'argent

Electrona risso (Cocco, 1829) – Electric lanternfish – Étincelle

Hygophum benoiti (Cocco, 1838) – Benoit's lanternfish – Lanterne de Benoit

Hygophum hygomii (Lütken, 1892) – Bermuda lanternfish – Lanterne des Bermudes

Lampadena atlantica Maul, 1969 – Atlantic sunbeam lanternfish – Lanterne soleil atlantique

Lampadena chavesi Collett, 1905 – Chaves' lanternfish – Lanterne de Chaves

Lampadena luminosa (Garman, 1899) – Luminous lanternfish – Lanterne lumineuse

Lampadena speculigera Goode & Bean, 1896 – Mirror lanternfish – Lanterne costumée

Lampanyctus crocodilus (Risso, 1810) – Jewel lanternfish – Lanterne crocodile

Lampanyctus intricarius Tåning, 1928 – Diamondcheek lanternfish – Lanterne à joue pailletée

Lampanyctus festivus Tåning, 1928 – Festive lanternfish – Lanterne festive

Lampanyctus macdonaldi (Goode & Bean, 1896) – MacDonald's lanternfish – Lanterne de MacDonald

Lampanyctus pusillus (Johnson, 1890) – Pygmy lanternfish – Lanterne pygmée

Lobianchia dofleini (Zugmayer, 1911) – Doflein's lanternfish – Lanterne de Doflein

Lobianchia gemellarii (Cocco, 1838) – Gemellar's lanternfish – Lanterne grande gueule

Myctophum punctatum Rafinesque, 1810 – Spotted lanternfish – Lanterne ponctuée

Nannobranchium atrum (Tåning, 1928) – Shortwing lanternfish – Lanterne à pectorale courte

Notolychnus valdiviae (Brauer, 1904) – Topside lanternfish – Lanterne de Valdivia

Notoscopelus bolini Nafpaktitis, 1975 – Bolin's lanternfish – Lanterne de Bolin

Notoscopelus caudispinosus (Johnson, 1863) – Spinetail lanternfish – Lanterne à queue épineuse

Notoscopelus elongatus (Costa, 1844) – Mediterranean lanternfish – Lanterne de Méditerranée

Notoscopelus krøyeri (Malm, 1861) – Krøyer's lanternfish – Lanterne de Krøyer

Protomyctophum arcticum (Lütken, 1892) – Arctic lanternfish – Lanterne arctique

Symbolophorus veranyi (Moreau, 1888) – Large-scale lanternfish – Lanterne à grandes écailles

Taaningichthys bathyphilus (Tåning, 1928) – Deepwater lanternfish – Lanterne à front lisse

Order LAMPRIFORMES

Family Lampridae

Lampris guttatus (Brünnich, 1788) – Opah – Opah

Family Lophotidae

Lophotus lacepede Giorna, 1809 – Crested oarfish – Lophote

Family Trachipteridae

- Trachipterus arcticus* (Brünnich, 1788) – Dealfish –
Trachyptère atlantique
Trachipterus trachipterus (Gmelin, 1789) – Mediterranean
dealfish – Trachyptère commun
Zu cristatus (Bonelli, 1819) – Scalloped ribbonfish –
Trachyptère ventru

Family Regalecidae

- Regalecus glesne* Ascanius, 1772 – King of herrings – Roi
des harengs

Order GADIFORMES**Family Macrouridae**

- Bathygadus melanobranchus* Vaillant, 1888 – Vaillant’s
grenadier – Grenadier de Vaillant
Cetonurus globiceps (Vaillant, 1884) – Globehead grenadier
– Grenadier à tête globuleuse
Coelorinchus caelorhincus (Risso, 1810) – Hollowsnout
grenadier – Grenadier raton
Coelorinchus caudani (Köhler, 1896) – Shortsnout
grenadier – Grenadier petit nez
Coelorinchus labiatus (Köhler, 1896) – Spearsnouted
grenadier – Grenadier long nez
Coryphaenoides armatus (Hector, 1875) – Abyssal
grenadier – Grenadier abyssal
Coryphaenoides brevibarbis (Goode & Bean, 1896) –
Shortbeard grenadier – Grenadier à barbe courte
Coryphaenoides carapinus Goode & Bean, 1883 – Carapine
grenadier – Grenadier à barbillon court
Coryphaenoides guentheri (Vaillant, 1888) – Günther’s
grenadier – Grenadier de Günther
Coryphaenoides leptolepis Günther, 1877 – Ghostly
grenadier – Grenadier petit front
Coryphaenoides mediterraneus (Giglioli, 1893) –
Mediterranean grenadier – Grenadier camus
Coryphaenoides rupestris Gunnerus, 1765 – Roundnose
grenadier – Grenadier de roche
Coryphaenoides zaniophorus (Vaillant, 1888) – Thickbeard
grenadier – Grenadier barbichu
Hymenocephalus italicus Giglioli, 1884 – Glasshead
grenadier – Grenadier plexiglas
Kumba dentoni Marshall, 1973 – Naked-head grenadier –
Grenadier à tête nue
Malacocephalus laevis (Lowe, 1843) – Softhead grenadier –
Grenadier barbu
Nezumia aequalis (Günther, 1878) – Common Atlantic
grenadier – Grenadier lisse
Nezumia sclerorhynchus (Valenciennes, 1838) – Roughtip
grenadier – Grenadier imberbe
Trachyrhynchus scabrus (Rafinesque, 1810) – Roughsnout
grenadier – Grenadier rude

Family Moridae

- Antimora rostrata* (Günther, 1878) – Blue antimora – Moro
bleu
Eretmophorus kleinenbergi Giglioli, 1889 – Oared mora –
Moro rameux
Gadella maraldi (Risso, 1810) – Gadella – Moro imberbe
Halargyreus johnsonii Günther, 1862 – Slender codling –
Moro svelte
Lepidion guentheri (Giglioli, 1880) – Günther’s codling –
Moro de Günther
Lepidion lepidion (Risso, 1810) – Mediterranean codling –
Moro de Méditerranée
Mora mora (Risso, 1810) – Common mora – Moro commun
Physiculus dalwigki Kaup, 1858 – Black codling – Moro
barbiche

Family Melanonidae

- Melanonus zugmayeri* Norman, 1930 – Arrowtail –
Mélanone

Family Gadidae

- Gadiculus argenteus* Guichenot, 1850 – Silvery pout –
Merlan argenté
Gadus morhua Linnaeus, 1758 – Atlantic cod – Morue de
l’Atlantique
Melanogrammus aeglefinus (Linnaeus, 1758) – Haddock –
Églefin
Merlangius merlangus (Linnaeus, 1758) – Whiting –
Merlan
Micromesistius poutassou (Risso, 1827) – Blue whiting –
Merlan bleu
Pollachius pollachius (Linnaeus, 1758) – Pollack – Lieu
jaune
Pollachius virens (Linnaeus, 1758) – Saithe – Lieu noir
Raniceps raninus (Linnaeus, 1758) – Tadpole fish – Trident
Trisopterus capelanus (Lacepède, 1800) – Mediterranean
poor cod – Capelan de Méditerranée
Trisopterus esmarkii (Nilsson, 1855) – Norway pout –
Tacaud norvégien
Trisopterus luscus (Linnaeus, 1758) – Pouting – Tacaud
commun
Trisopterus minutus (Linnaeus, 1758) – Poor cod – Capelan
de l’Atlantique

Family Lotidae

- Ciliata mustela* (Linnaeus, 1758) – Fivebeard rockling –
Motelle à cinq barbillons
Ciliata septentrionalis (Collett, 1875) – Northern rockling –
Motelle nordique
Enchelyopus cimbrius (Linnaeus, 1766) – Fourbeard
rockling – Motelle à quatre barbillons
Gaidropsarus biscayensis (Collett, 1890) – Spotted rockling
– Motelle mouchetée
Gaidropsarus macrophthalmus (Günther, 1867) – Bigeye
rockling – Motelle à grands yeux

- Gaidropsarus mediterraneus* (Linnaeus, 1758) – Shore rockling – Motelle de Méditerranée
Gaidropsarus vulgaris (Cloquet, 1824) – Three-bearded rockling – Motelle commune
Molva dypterygia (Pennant, 1784) – Blue ling – Lingue bleue
Molva macrophthalma (Rafinesque, 1810) – Spanish ling – Lingue espagnole
Molva molva (Linnaeus, 1758) – Ling – Lingue franche

Family Phycidae

- Phycis blennoides* (Brünnich, 1768) – Greater forkbeard – Mostelle de fond
Phycis phycis (Linnaeus, 1766) – Forkbeard – Mostelle de roche

Family Merlucciidae

- Lyconus brachycolus* Holt & Byrne, 1906 – Grenadier hake – Merlu grenadier
Merluccius merluccius (Linnaeus, 1758) – European hake – Merlu européen

Order OPHIDIIFORMES**Family Ophidiidae**

- Benthocometes robustus* (Goode & Bean, 1886) – Yellow cusk-eel – Fanfre jaune
Lamprogrammus shcherbachevi Cohen & Rohr, 1993 – Scaleline cusk-eel – Donzelle grand peigne
Ophidion barbatum Linnaeus, 1758 – Snake blenny – Donzelle à nageoires noires
Ophidion rochei Müller, 1845 – Roche's snake blenny – Donzelle à nageoires jaunes
Parophidion vassali (Risso, 1810) – Red snake blenny – Donzelle à nageoires rouges
Spectrunculus grandis (Günther, 1877) – Pudgy cusk-eel – Donzelle broche

Family Parabrotulidae

- Parabrotula plagiophthalma* Zugmayer, 1911 – False cusk-eel – Gélatinette sombre

Family Carapidae

- Carapus acus* (Brünnich, 1768) – Pearlfish – Aurin
Echiodon dentatus (Cuvier, 1829) – Toothed pearlfish – Fierasfer denté
Echiodon drummondii Thompson, 1837 – Atlantic pearlfish – Fierasfer atlantique

Family Bythitidae

- Cataetix alleni* (Byrne, 1906) – Allen's brotula – Donzelette de Allen
Cataetix laticeps Koefoed, 1927 – Widehead brotula – Grande donzelette
Grammonus ater (Risso, 1810) – Black brotula – Fanfre noir
Melodichthys hadrocephalus Nielsen & Cohen, 1986 – Smalltail brotula – Donzelette petite queue

Order BATRACHOIDIFORMES**Family Batrachoididae**

- Halobatrachus didactylus* (Bloch & Schneider, 1801) – Lusitanian toadfish – Poisson-crapaud lusitanien

Order LOPHIIFORMES**Family Lophiidae**

- Lophius budegassa* Spinola, 1807 – Blackbellied angler – Baudroie rousse
Lophius piscatorius Linnaeus, 1758 – Angler – Baudroie commune

Family Chaunacidae

- Chaunax pictus* Lowe, 1846 – Pink frogmouth – Baudroie rose

Family Oneirodidae

- Lophodolos acanthognathus* Regan, 1925 – Whalehead dreamer – Rêveur à front haut
Oneirodes carlsbergi (Regan & Trewavas, 1932) – Longtail dreamer – Rêveur à grande queue
Oneirodes eschrichtii Lütken, 1871 – Cosmopolitan dreamer – Rêveur cosmopolite

Family Ceratiidae

- Ceratias holboelli* Krøyer, 1845 – Krøyer's deep-sea angler fish – Noah

Order GOBIESOCIFORMES**Family Gobiesocidae**

- Apletodon dentatus* (Facciola, 1887) – Small-headed clingfish – Porte-écuelle à petite tête
Apletodon incognitus Hofrichter & Patzner, 1997 – Sea urchin clingfish – Porte-écuelle des oursins
Diplecogaster bimaculata (Bonnaterre, 1788) – Two spotted clingfish – Porte-écuelle à deux taches
Gouania willdenowi (Risso, 1810) – Blunt-snouted clingfish – Porte-écuelle jaune
Lepadogaster candolii Risso, 1810 – Connemarra clingfish – Lépadogastère de Candolle
Lepadogaster lepadogaster (Bonnaterre, 1788) – Shore clingfish – Lépadogastère commun
Lepadogaster purpurea (Bonnaterre, 1788) – Cornish clingfish – Lépadogastère pourpre
Opeatogenys gracilis (Canestrini, 1864) – Spindly clingfish – Porte-écuelle grêle

Order ATHERINIFORMES**Family Atherinidae**

- Atherina boyeri* Risso, 1810 – Big-scale sand smelt – Joël
Atherina hepsetus Linnaeus, 1758 – Mediterranean sand smelt – Sauclet
Atherina presbyter Cuvier, 1829 – Sand smelt – Prêtre

Order BELONIFORMES**Family Scomberesocidae**

Scomberesox saurus (Walbaum, 1792) – Atlantic saury –
Balaou atlantique

Family Belonidae

Belone belone (Linnaeus, 1760) – Garfish – Orphie

Belone svetovidovi Collette & Parin, 1970 – Short-beaked
garfish – Aiguille

Tylosurus imperialis (Rafinesque, 1810) – Agujón
needlefish – Aiguille voyeuse

Family Exocoetidae

**Cheilopogon cyanopterus* (Valenciennes, 1847) –
Margined flyingfish – Exocet codène

Cheilopogon heterurus (Rafinesque, 1810) – Blotchwing
flyingfish – Exocet grande aile

Exocoetus volitans Linnaeus, 1758 – Tropical two-wing
flyingfish – Exocet commun

Hirundichthys rondelii (Valenciennes, 1847) – Black wing
flyingfish – Exocet aile noire

Hirundichthys speculiger (Valenciennes, 1847) –
Mirrorwing flyingfish – Exocet miroir

Order STEPHANOBERYCIFORMES**Family Melamphaidae**

Poromitra capito Goode & Bean, 1883 – Ridgehead – Lubin
rhino

Poromitra crassiceps (Günther, 1878) – Crested bigscale –
Lubin la crête

Poromitra megalops (Lütken, 1878) – Largeye bigscale –
Lubin gros œil

Scopelogadus beanii (Günther, 1887) – Bean's bigscale –
Lubin de Bean

Order BERYCIFORMES**Family Trachichthyidae**

Hoplostethus atlanticus Collett, 1889 – Orange roughy –
Hoplostète orange

Hoplostethus cadenati Quéro, 1974 – Black slimehead –
Hoplostète noir

Hoplostethus mediterraneus Cuvier, 1829 – Mediterranean
slimehead – Hoplostète argenté

Family Anoplogastridae

Anoplogaster cornuta (Valenciennes, 1833) – Common
fangtooth – Ogre

Family Berycidae

Beryx decadactylus Cuvier, 1829 – Alfonsino – Béryx
commun

Beryx splendens Lowe, 1834 – Splendid alfonsino – Béryx
élané

Order CETOMIMIFORMES**Family Rondeletiidae**

Rondeletia loricata Abe & Hotta, 1963 – Redmouth
whalefish – Rondelet diable

Order ZEIFORMES**Family Oreosomatidae**

Alloctytus verrucosus (Gilchrist, 1906) – Warty dory –
Arrose verruqueuse

Neocyttus helgae (Holt & Byrne, 1908) – False boarfish –
Arrose sourcilleuse

Family Parazenidae

Cyttopsis rosea (Lowe, 1843) – Rosy dory – Saint-Pierre
rouge

Family Grammicolepididae

Grammicolepis brachiusculus Poey, 1873 – Thorny
tinsel fish – Gramolette

Family Zeidae

Zenopsis conchifer (Lowe, 1852) – Silvery John dory –
Saint-Pierre argenté

Zeus faber Linnaeus, 1758 – John dory – Saint-Pierre

Order GASTEROSTEIFORMES**Family Gasterosteidae**

Gasterosteus aculeatus Linnaeus, 1758 – Three-spined
stickleback – Épinoche à trois épines

Pungitius pungitius (Linnaeus, 1758) – Ninespine
stickleback – Épinochette

Spinachia spinachia (Linnaeus, 1758) – Sea stickleback –
Épinoche de mer

Order SYNGNATHIFORMES**Family Fistulariidae**

**Fistularia commersonii* Rüppell, 1838 – Bluespotted
cornetfish – Poisson-flûte à taches bleues

Family Centriscidae

Macroramphosus scolopax (Linnaeus, 1758) – Longspine
snipefish – Bécasse de mer

Family Syngnathidae

Entelurus aequoreus (Linnaeus, 1758) – Snake pipefish –
Entélure

Hippocampus guttulatus Cuvier, 1829 – Long-snouted
seahorse – Hippocampe à long nez

Hippocampus hippocampus (Linnaeus, 1758) – Short
snouted seahorse – Hippocampe à nez court

Nerophis lumbriciformis (Jenyns, 1835) – Worm pipefish –
Nérophis lombricoïde

Nerophis maculatus Rafinesque, 1810 – Spotted pipefish –
Nérophis tacheté

Nerophis ophidion (Linnaeus, 1758) – Straightnose pipefish
– Nérophis à nez droit

Syngnathus abaster Risso, 1827 – Black-striped pipefish –
Syngnathe de lagune

- Syngnathus acus* Linnaeus, 1758 – Greater pipefish – Syngnathe aiguille
Syngnathus phlegon Risso, 1827 – Spiny pipefish – Syngnathe épineux
Syngnathus rostellatus Nilsson, 1855 – Lesser pipefish – Syngnathe perçat
Syngnathus tenuirostris Rathke, 1837 – Narrow-snouted pipefish – Syngnathe à nez grêle
Syngnathus typhle Linnaeus, 1758 – Broadnosed pipefish – Siphonostome

Order SCORPAENIFORMES

Family Sebastidae

- Helicolenus dactylopterus* (Delaroche, 1809) – Blackbelly rosefish – Sébaste chèvre
Sebastes norvegicus (Ascanius, 1772) – Golden redfish – Sébaste doré
Trachyscorpia echinata (Köhler, 1896) – Spiny scorpionfish – Rascasse épineuse

Family Scorpaenidae

- Scorpaena elongata* Cadenat, 1943 – Slender rockfish – Rascasse rose
Scorpaena loppei Cadenat, 1943 – Cadenat's rockfish – Rascasse de Cadenat
Scorpaena maderensis Valenciennes, 1833 – Madeira rockfish – Rascasse de Madère
Scorpaena notata Rafinesque, 1810 – Small red scorpionfish – Rascasse pustuleuse
Scorpaena porcus Linnaeus, 1758 – Black scorpionfish – Rascasse brune
Scorpaena scrofa Linnaeus, 1758 – Red scorpionfish – Rascasse rouge

Family Dactylopteridae

- Dactylopterus volitans* (Linnaeus, 1758) – Flying gurnard – Grondin volant

Family Triglidae

- Chelidonichthys cuculus* (Linnaeus, 1758) – Red gurnard – Grondin rouge
Chelidonichthys lucerna (Linnaeus, 1758) – Tub gurnard – Grondin perlon
Chelidonichthys obscurus (Walbaum, 1792) – Longfin gurnard – Grondin sombre
Eutrigla gurnardus (Linnaeus, 1758) – Grey gurnard – Grondin gris
Lepidotrigla cavillone (Lacepède, 1801) – Large-scaled gurnard – Grondin cavillone
Lepidotrigla dieuzeidei Blanc & Hureau, 1973 – Spiny gurnard – Grondin de Dieuzeide
Trigla lyra Linnaeus, 1758 – Piper gurnard – Grondin lyre
Trigloporus lastoviza (Bonnaterre, 1788) – Streaked gurnard – Grondin camard

Family Peristediidae

- Peristedion cataphractum* (Linnaeus, 1758) – African armoured searobin – Malarmat

Family Cottidae

- Micrenophrys lilljeborgii* (Collett, 1875) – Norway bullhead – Chabot nain
Myoxocephalus scorpius (Linnaeus, 1758) – Shorthorn sculpin – Chaboisseau à épines courtes
Taurulus bubalis (Euphrasen, 1786) – Longspined bullhead – Chabot de mer

Family Psychrolutidae

- Cottunculus microps* Collett, 1875 – Polar sculpin – Cotte polaire
Cottunculus thomsonii (Günther, 1882) – Pallid sculpin – Cotte blême

Family Agonidae

- Agonus cataphractus* (Linnaeus, 1758) – Hooknose – Souris de mer
Leptagonus decagonus (Bloch & Schneider, 1801) – Atlantic poacher – Agone atlantique

Family Cyclopteridae

- Cyclopterus lumpus* Linnaeus, 1758 – Lumpfish – Lompe

Family Liparidae

- Eutelichthys leptochirus* Tortonese, 1959 – Mediterranean snailfish – Limace de Méditerranée
Liparis liparis (Linnaeus, 1766) – Striped seasnail – Limace de mer
Liparis montagui (Donovan, 1804) – Montagu's seasnail – Limace anicotte

Order PERCIFORMES

Family Moronidae

- Dicentrarchus labrax* (Linnaeus, 1758) – European seabass – Bar
Dicentrarchus punctatus (Bloch, 1792) – Spotted seabass – Bar tacheté

Family Polyprionidae

- Polyprion americanus* (Bloch & Schneider, 1801) – Wreckfish – Cernier commun

Family Serranidae⁷

- Anthias anthias* (Linnaeus, 1758) – Swallowtail seaperch – Barbier commun
Epinephelus aeneus (Geoffroy Saint-Hilaire, 1817) – White grouper – Mérou blanc
Epinephelus caninus (Valenciennes, 1843) – Dogtooth grouper – Mérou gris

⁷ *Hyporthodus nigrilus* (Holbrook, 1855), cited by Quérou *et al.* (2000) is not included since only one large adult was recorded once from Brittany but never again. The occurrence of the species in Europe was also rejected by the IUCN Grouper Specialist Group.

- Epinephelus costae* (Steindachner, 1878) – Goldblotch grouper – Mérou badèche
- Epinephelus marginatus* (Lowe, 1834) – Dusky grouper – Mérou brun
- Mycteroperca rubra* (Bloch, 1793) – Mottled grouper – Badèche rouge
- **Serranus atricauda* Günther, 1874 – Blacktail comber – Serran à queue noire
- Serranus cabrilla* (Linnaeus, 1758) – Comber – Serran-chevette
- Serranus hepatus* (Linnaeus, 1758) – Brown comber – Serran tambour
- Serranus scriba* (Linnaeus, 1758) – Painted comber – Serran écriture
- Family Callanthiidae**
- Callanthias ruber* (Rafinesque, 1810) – Parrot seaperch – Barbier perroquet
- Family Apogonidae**
- Apogon imberbis* (Linnaeus, 1758) – Cardinalfish – Apogon coq
- Family Epigonidae**
- Epigonus constanciae* (Giglioli, 1880) – Spiny cardinalfish – Sonneur épineux
- Epigonus denticulatus* Dieuzeide, 1950 – Pencil cardinal – Sonneur nain
- Epigonus telescopus* (Risso, 1810) – Black cardinalfish – Sonneur commun
- Family Pomatomidae**
- Pomatomus saltatrix* (Linnaeus, 1766) – Bluefish – Tassergal
- Family Echeneidae**
- Echeneis naucrates* Linnaeus, 1758 – Live sharksucker – Grand rémora
- **Phtheichthys lineatus* (Menziés, 1791) – Slender suckerfish – Rémora grêle
- **Remora brachyptera* (Lowe, 1839) – Spearfish remora – Rémora des espadons
- Remora remora* (Linnaeus, 1758) – Sharksucker – Rémora commun
- Family Carangidae**
- Campogramma glaycos* (Lacepède, 1801) – Vadigo – Liche lirio
- Caranx crysos* (Mitchill, 1815) – Blue runner – Carangue coubali
- **Caranx fischeri* Smith-Vaniz & Carpenter, 2007 – Longfin crevalle jack – Carangue de Fischer
- **Decapterus macarellus* (Cuvier, 1833) – Mackerel scad – Comète maquereau
- Lichia amia* (Linnaeus, 1758) – Leerfish – Liche
- Naucrates ductor* (Linnaeus, 1758) – Pilotfish – Poisson pilote
- Pseudocaranx dentex* (Bloch & Schneider, 1801) – White trevally – Carangue dentue
- **Seriola carpenteri* Mather, 1971 – Guinean amberjack – Sériole guinéenne
- Seriola dumerili* (Risso, 1810) – Greater amberjack – Sériole couronnée
- **Seriola fasciata* (Bloch, 1793) – Lesser amberjack – Sériole babiane
- Seriola rivoliana* Valenciennes, 1833 – Longfin yellowtail – Sériole limon
- Trachinotus ovatus* (Linnaeus, 1758) – Pompano – Palomine
- Trachurus mediterraneus* (Steindachner, 1868) – Mediterranean horse mackerel – Chinchard à queue jaune
- Trachurus picturatus* (Bowdich, 1825) – Blue jack mackerel – Chinchard du large
- Trachurus trachurus* (Linnaeus, 1758) – Atlantic horse mackerel – Chinchard commun
- Family Coryphaenidae**
- Coryphaena equiselis* Linnaeus, 1758 – Pompano dolphinfish – Coryphène dauphin
- Coryphaena hippurus* Linnaeus, 1758 – Common dolphinfish – Coryphène commune
- Family Bramidae**
- Brama brama* (Bonnaterre, 1788) – Atlantic pomfret – Grande castagnole
- Pterycombus brama* Fries, 1837 – Atlantic fanfish – Castagnole voilier
- Taractes asper* Lowe, 1843 – Rough pomfret – Castagnole rugueuse
- Family Lobotidae**
- Lobotes surinamensis* (Bloch, 1790) – Tripletail – Croupia roche
- Family Haemulidae**
- **Parapristipoma octolineatum* (Valenciennes, 1833) – African striped grunt – Grondeur rayé
- Pomadasy incisus* (Bowdich, 1825) – Bastard grunt – Grondeur métis
- Family Sparidae**
- Boops boops* (Linnaeus, 1758) – Bogue – Bogue
- Dentex dentex* (Linnaeus, 1758) – Common dentex – Denti
- Dentex gibbosus* (Rafinesque, 1810) – Pink dentex – Denté bossu
- Dentex macrophthalmus* (Bloch, 1791) – Large-eye dentex – Denté à gros yeux
- Dentex maroccanus* Valenciennes, 1830 – Morocco dentex – Denté du Maroc
- Diplodus annularis* (Linnaeus, 1758) – Annular seabream – Sparailon
- **Diplodus cadenati* de la Paz, Bauchot & Daget, 1974 – Moroccan white seabream – Sar commun du Maroc
- Diplodus cervinus* (Lowe, 1838) – Zebra seabream – Sar tambour
- Diplodus puntazzo* (Walbaum, 1792) – Sharpnose seabream – Sar à museau pointu

Diplodus sargus (Linnaeus, 1758) – White seabream – Sar commun

Diplodus vulgaris (Geoffroy Saint-Hilaire, 1817) – Common two-banded seabream – Sar à tête noire

Lithognathus mormyrus (Linnaeus, 1758) – Sand steenbras – Marbré

Oblada melanura (Linnaeus, 1758) – Saddled seabream – Oblade

Pagellus acarne (Risso, 1827) – Axillary seabream – Pageot acarné

**Pagellus bellottii* Steindachner, 1882 – Red pandora – Pageot à tache rouge

Pagellus bogaraveo (Brünnich, 1768) – Blackspot seabream – Pageot rose

Pagellus erythrinus (Linnaeus, 1758) – Common pandora – Pageot commun

**Pagrus caeruleostictus* (Valenciennes, 1830) – Bluespotted seabream – Pagre à points bleus

Pagrus pagrus (Linnaeus, 1758) – Red porgy – Pagre commun

Sarpa salpa (Linnaeus, 1758) – Salema – Saupe

Sparus aurata Linnaeus, 1758 – Gilthead seabream – Dorade royale

Spondylisoma cantharus (Linnaeus, 1758) – Black seabream – Dorade grise

Family Centracanthidae

Centracanthus cirrus Rafinesque, 1810 – Curled picarel – Picarel guetteur

Spicara maena (Linnaeus, 1758) – Blotched picarel – Mendole

Spicara smaris (Linnaeus, 1758) – Picarel – Picarel

Family Sciaenidae

Argyrosomus regius (Asso, 1801) – Meagre – Maigre

Sciaena umbra Linnaeus, 1758 – Brown meagre – Corb

Umbrina canariensis Valenciennes, 1843 – Canary drum – Ombrine bronze

Umbrina cirrosa (Linnaeus, 1758) – Shi drum – Ombrine côtière

Umbrina ronchus Valenciennes, 1843 – Fusca drum – Ombrine fusca

Family Mullidae

Mullus barbatus Linnaeus, 1758 – Red mullet – Rouget de vase

Mullus surmuletus Linnaeus, 1758 – Surmullet – Rouget de roche

Family Kyphosidae

**Kyphosus sectatrix* (Linnaeus, 1758) – Bermuda sea chub – Calicagère blanche

Family Cepolidae

Cepola macrophthalma (Linnaeus, 1758) – Red bandfish – Cépole

Family Mugilidae

Chelon labrosus (Risso, 1827) – Thicklip grey mullet – Mulet lippu

Liza aurata (Risso, 1810) – Golden grey mullet – Mulet doré

Liza ramada (Risso, 1827) – Thinlip grey mullet – Mulet porc

Liza saliens (Risso, 1810) – Leaping mullet – Mulet sauteur

Mugil cephalus Linnaeus, 1758 – Flathead grey mullet – Mulet à grosse tête

Oedalechilus labeo (Cuvier, 1829) – Boxlip mullet – Mulet labéon

Family Pomacentridae

Chromis chromis (Linnaeus, 1758) – Damsel fish – Castagnole

Family Labridae

Acantholabrus palloni (Risso, 1810) – Scale-rayed wrasse – Roucaou

Centrolabrus exoletus (Linnaeus, 1758) – Rock cook – Centrolabre

Coris julis (Linnaeus, 1758) – Rainbow wrasse – Girelle

Ctenolabrus rupestris (Linnaeus, 1758) – Goldsinny wrasse – Rouquié

Labrus bergylta Ascanius, 1767 – Ballan wrasse – Vieille commune

Labrus merula Linnaeus, 1758 – Brown wrasse – Merle

Labrus mixtus Linnaeus, 1758 – Cuckoo wrasse – Vieille coquette

Labrus viridis Linnaeus, 1758 – Green wrasse – Labre vert

Lappanella fasciata (Cocco, 1833) – Sharp-toothed wrasse – Labre iris

Symphodus bailloni (Valenciennes, 1839) – Baillon's wrasse – Crénilabre de Baillon

Symphodus cinereus (Bonnaterre, 1788) – Grey wrasse – Crénilabre cendré

Symphodus doderleini Jordan, 1890 – Doderlein's wrasse – Crénilabre de Doderlein

Symphodus mediterraneus (Linnaeus, 1758) – Axillary wrasse – Crénilabre méditerranéen

Symphodus melanocercus (Risso, 1810) – Blacktailed wrasse – Crénilabre à queue noire

Symphodus melops (Linnaeus, 1758) – Corkwing wrasse – Crénilabre mélops

Symphodus ocellatus (Linnaeus, 1758) – Ocellated wrasse – Crénilabre ocellé

Symphodus roissali (Risso, 1810) – Five-spotted wrasse – Crénilabre à cinq taches

Symphodus rostratus (Bloch, 1791) – Pointed-snout wrasse – Sublet

Symphodus tinca (Linnaeus, 1758) – Peacock wrasse – Crénilabre paon

Thalassoma pavo (Linnaeus, 1758) – Ornate wrasse – Girelle paon

Xyrichtys novacula (Linnaeus, 1758) – Pearly razorfish –
Rason

Family Scaridae

Sparisoma cretense (Linnaeus, 1758) – Parrotfish –
Perroquet vieillard

Family Zoarcidae

Lycenchelys alba (Vaillant, 1888) – White eelpout – Lycode
blanche

Melanostigma atlanticum Koefoed, 1952 – Atlantic soft
pout – Mollase atlantique

Pachycara bulbiceps (Garman, 1899) – Snubnose eelpout –
Lycode obèse

Pachycara crassiceps (Roule, 1916) – Brown eelpout –
Lycode brun noir

Zoarces viviparus (Linnaeus, 1758) – European eelpout –
Loquette d'Europe

Family Stichaeidae

Chirolophis ascanii (Walbaum, 1792) – Yarrell's blenny –
Toupet marbré

Family Pholidae

Pholis gunnellus (Linnaeus, 1758) – Rock gunnel – Gonelle

Family Anarhichadidae

Anarhichas denticulatus Krøyer, 1845 – Northern wolffish –
Loup gélatineux

Anarhichas lupus Linnaeus, 1758 – Atlantic wolffish – Loup
atlantique

Family Chiasmodontidae

Pseudoscopelus obtusifrons (Fowler, 1934) – Swallowerfish
– Gargare

Family Ammodytidae

Ammodytes marinus Raitt, 1934 – Lesser sand-eel – Lançon
nordique

Ammodytes tobianus Linnaeus, 1758 – Small sand-eel –
Lançon équille

Gymnammodytes cicereus (Rafinesque, 1810) –
Mediterranean sand-eel – Cicerelle de Méditerranée

Gymnammodytes semisquamatus (Jourdain, 1879) – Smooth
sand-eel – Cicerelle de l'Atlantique

Hyperoplus immaculatus (Corbin, 1950) – Greater sand-eel
– Lançon jolivet

Hyperoplus lanceolatus (Le Sauvage, 1824) – Great sand-
eel – Lançon commun

Family Trachinidae

Echiichthys vipera (Cuvier, 1829) – Lesser weever – Petite
vive

Trachinus araneus Cuvier, 1829 – Spotted weever – Vive-
araignée

Trachinus draco Linnaeus, 1758 – Greater weever – Grande
vive

Trachinus radiatus Cuvier, 1829 – Starry weever – Vive à
tête rayonnée

Family Uranoscopidae

Uranoscopus scaber Linnaeus, 1758 – Stargazer –
Uranoscope

Family Tripterygiidae

Tripterygion delaisi Cadenat & Blache, 1970 – Black-faced
blenny – Triptérygion jaune

Tripterygion melanurum Guichenot, 1850 – Black-spotted
triplefin – Triptérygion nain

Tripterygion tripteronotum (Risso, 1810) – Red-black
triplefin – Triptérygion à bec

Family Clinidae

Clinitrachus argentatus (Risso, 1810) – Cline – Cline
argenté

Family Blenniidae

Aidablennius sphynx (Valenciennes, 1836) – Sphinx blenny
– Blennie sphinx

Blennius ocellaris Linnaeus, 1758 – Butterfly blenny –
Blennie papillon

Coryphoblennius galerita (Linnaeus, 1758) – Montagu's
blenny – Blennie coiffée

Lipophrys pholis (Linnaeus, 1758) – Shanny – Blennie
mordocet

Lipophrys trigloides (Valenciennes, 1836) – Trigloid blenny
– Blennie trigloïde

Microlipophrys canevae (Vinciguerra, 1880) – Yellow cheek
blenny – Blennie de Caneva

Microlipophrys dalmatinus (Steindachner & Kolombatovic,
1883) – Dalmatian blenny – Blennie dalmate

Microlipophrys nigriceps (Vinciguerra, 1883) – Black-
headed blenny – Blennie à tête noire

Parablennius gattorugine (Linnaeus, 1758) – Tompot
blenny – Blennie gattorugine

Parablennius incognitus (Bath, 1968) – Mystery blenny –
Blennie diablo

Parablennius pilicornis (Cuvier, 1829) – Ringneck blenny –
Blennie pilicorne

Parablennius rouxi (Cocco, 1833) – Long-stripped blenny –
Blennie de Roux

Parablennius ruber (Valenciennes, 1836) – Portuguese
blenny – Blennie rouge

Parablennius sanguinolentus (Pallas, 1814) – Rusty blenny
– Blennie palmicorne

Parablennius tentacularis (Brünnich, 1768) – Tentacled
blenny – Blennie tentaculée

Parablennius zvonimiri (Kolombatovic, 1892) – Zvonimir's
blenny – Blennie de Zvonimir

Salarias basilisca (Valenciennes, 1836) – Basilisk blenny –
Blennie basilic

Salarias pavo (Risso, 1810) – Peacock blenny – Blennie
paon

Scartella cristata (Linnaeus, 1758) – Molly miller – Blennie
chevelue

Family Callionymidae

- Callionymus fasciatus* Valenciennes, 1837 – Banded dragonet – Dragonnet fascié
Callionymus lyra Linnaeus, 1758 – Dragonet – Dragonnet lyre
Callionymus maculatus Rafinesque, 1810 – Spotted dragonet – Dragonnet tacheté
Callionymus pusillus Delaroche, 1809 – Sailfin dragonet – Dragonnet élégant
Callionymus reticulatus Valenciennes, 1837 – Reticulated dragonet – Dragonnet réticulé
Callionymus risso Lesueur, 1814 – Risso's dragonet – Dragonnet de Risso
Synchiropus phaeton (Günther, 1861) – Phaeton dragonet – Dragonnet phaéton

Family Gobiidae

- Aphia minuta* (Risso, 1810) – Transparent goby – Gobie nonnat
Buenia affinis Iljin, 1930 – De Buen's goby – Gobie réticulé
Buenia jeffreysii (Günther, 1867) – Jeffreys' goby – Gobie de Jeffreys
Chromogobius quadrivittatus (Steindachner, 1863) – Chestnut goby – Gobie à quatre bandes
Chromogobius zebratus (Kolombatovic, 1891) – Kolombatovic's goby – Gobie grêle zébré
Corcyrogobius liechtensteini (Kolombatovic, 1891) – Liechtenstein's goby – Gobie-corail nain
Crystallogobius linearis (Düben, 1845) – Crystal goby – Gobie cristal
Deltentosteus collonianus (Risso, 1820) – Toothed goby – Gobie denté
Deltentosteus quadrimaculatus (Valenciennes, 1837) – Four-spotted goby – Gobie à quatre taches
Didogobius schlieweni Miller, 1993 – Schliewen's goby – Gobie nain à taches blanches
Didogobius splechnai Ahnelt & Patzner, 1995 – Splechna's goby – Gobie nain à barres brunes
Gammogobius steinitzi Bath, 1971 – Steinitz's goby – Gobie de Steinitz
Gobius ater Bellotti, 1888 – Bellotti's goby – Gobie de Bellotti
Gobius auratus Risso, 1810 – Golden goby – Gobie doré
Gobius bucchichi Steindachner, 1870 – Bucchich's goby – Gobie moucheté
Gobius cobitis Pallas, 1814 – Giant goby – Gobie céphalote
Gobius cruentatus Gmelin, 1789 – Red-mouthed goby – Gobie ensanglanté
Gobius fallax Sarato, 1889 – Sarato's goby – Gobie de Sarato
Gobius gasteveni Miller, 1974 – Steven's goby – Gobie de Steven
Gobius geniporus Valenciennes, 1837 – Slender goby – Gobie à joues poreuses

- Gobius incognitus* Kovačić & Šanda, 2016 – Unknown goby – Gobie méconnu
Gobius kolombatovici Kovačić & Miller, 2000 – Kolombatovic's goby – Gobie à taches oranges
Gobius niger Linnaeus, 1758 – Black goby – Gobie noir
Gobius paganellus Linnaeus, 1758 – Rock goby – Gobie paganel
Gobius roulei de Buen, 1928 – Roule's goby – Gobie de Roule
Gobius vittatus Vinciguerra, 1883 – Striped goby – Gobie rayé
Gobius xanthocephalus Heymer & Zander, 1992 – Yellow-headed goby – Gobie à tête jaune
Gobiusculus flavescens (Fabricius, 1779) – Two-spotted goby – Gobie à deux taches
Lebetus guilleti (Le Danois, 1913) – Guillet's goby – Gobie nain de Guillet
Lebetus scorpioides (Collett, 1874) – Diminutive goby – Gobie nabot
Lesueurigobius friesii (Malm, 1874) – Fries' goby – Gobie de Fries
Lesueurigobius suerii (Risso, 1810) – Lesueur's goby – Gobie de Lesueur
Millerigobius macrocephalus (Kolombatović, 1891) – Large-headed goby – Gobie nain à grosse tête
Odondebuenia balearica (Pellegrin & Fage, 1907) – Coralline goby – Gobie des Baléares
Pomatoschistus bathi Miller, 1982 – Bath's goby – Gobie de Bath
Pomatoschistus lozanoi (de Buen, 1923) – Lozano's goby – Gobie de Lozano
Pomatoschistus marmoratus (Risso, 1810) – Marbled goby – Gobie marbré
Pomatoschistus microps (Krøyer, 1838) – Common goby – Gobie tacheté
Pomatoschistus minutus (Pallas, 1770) – Sand goby – Gobie des sables
Pomatoschistus norvegicus (Collett, 1902) – Norwegian goby – Gobie norvégien
Pomatoschistus pictus (Malm, 1865) – Painted goby – Gobie varié
Pomatoschistus quagga (Heckel, 1837) – Quagga goby – Gobie quagga
Pseudaphya ferreri (de Buen & Fage, 1908) – Ferrer's goby – Gobie-nageur de Ferrer
Thorogobius ephippiatus (Lowe, 1839) – Leopard-spotted goby – Gobie léopard
Thorogobius macrolepis (Kolombatovic, 1891) – Large-scaled goby – Gobie à grandes écailles
Vanneaugobius dollfusi Brownell, 1978 – Dollfus' goby – Gobie nain de Dollfus
Zebus zebus (Risso, 1827) – Zebra goby – Gobie zébré

Zosterisessor ophiocephalus (Pallas, 1814) – Grass goby – Gobie lote

Family Siganidae

**Siganus luridus* (Rüppell, 1829) – Dusky spinefoot – Sigan sombre

Family Luvaridae

Luvarus imperialis Rafinesque, 1810 – Luvar – Louvareau

Family Sphyraenidae

Sphyraena sphyraena (Linnaeus, 1758) – European barracuda – Bécune européenne

Sphyraena viridensis Cuvier, 1829 – Yellowmouth barracuda – Bécune à bouche jaune

Family Gempylidae

Lepidocybium flavobrunneum (Smith, 1843) – Escolar – Escolier noir

Nesiarchus nasutus Johnson, 1862 – Black gemfish – Escolier long nez

Promethichthys prometheus (Cuvier, 1832) – Roudi escolar – Escolier clair

Ruvettus pretiosus Cocco, 1833 – Oilfish – Rouvet

Family Trichiuridae

Aphanopus carbo Lowe, 1839 – Black scabbardfish – Poisson-sabre noir

Benthodesmus simonyi (Steindachner, 1891) – North Atlantic frostfish – Poisson-sabre ganse

Lepidopus caudatus (Euphrasen, 1788) – Silver scabbardfish – Poisson-sabre argenté

Trichiurus lepturus Linnaeus, 1758 – Largehead hairtail – Poisson-sabre commun

Family Scombridae

Acanthocybium solandri (Cuvier, 1832) – Wahoo – Thazard bâtard

Auxis rochei (Risso, 1810) – Bullet tuna – Bonitou

Auxis thazard (Lacepède, 1800) – Frigate tuna – Auxide

Euthynnus alletteratus (Rafinesque, 1810) – Little tunny – Thonine commune

Katsuwonus pelamis (Linnaeus, 1758) – Skipjack tuna – Listao

Orcynopsis unicolor (Geoffroy Saint-Hilaire, 1817) – Plain bonito – Palomette

Sarda sarda (Bloch, 1793) – Atlantic bonito – Bonite à dos rayé

Scomber colias Gmelin, 1789 – Atlantic chub mackerel – Maquereau espagnol

Scomber scombrus Linnaeus, 1758 – Atlantic mackerel – Maquereau commun

**Scomberomorus tritor* (Cuvier, 1832) – West African Spanish mackerel – Thazard blanc

Thunnus alalunga (Bonnaterre, 1788) – Albacore – Germon

Thunnus obesus (Lowe, 1839) – Bigeye tuna – Thon obèse

Thunnus thynnus (Linnaeus, 1758) – Atlantic bluefin tuna – Thon rouge de l'Atlantique

Family Xiphiidae

Xiphias gladius Linnaeus, 1758 – Swordfish – Espadon

Family Istiophoridae

Istiophorus platypterus (Shaw, 1792) – Sailfish – Voilier

Kajikia albida (Poey, 1860) – Atlantic white marlin – Makaire blanc de l'Atlantique

Makaira nigricans Lacepède, 1802 – Blue marlin – Makaire bleu

Tetrapturus belone Rafinesque, 1810 – Mediterranean spearfish – Marlin de Méditerranée

**Tetrapturus pfluegeri* Robins & de Sylva, 1963 – Longbill spearfish – Makaire bécune

Family Centrolophidae

Centrolophus niger (Gmelin, 1789) – Rudderfish – Centrolophe noir

Hyperoglyphe perciformis (Mitchill, 1818) – Barrelfish – Centrolophe épineux

Schedophilus medusophagus (Cocco, 1839) – Cornish blackfish – Rouffe des méduses

Schedophilus ovalis (Cuvier, 1833) – Imperial blackfish – Rouffe impérial

Family Nomeidae

Cubiceps gracilis (Lowe, 1843) – Driftfish – Dérivant grêle

Psenes pellucidus Lütken, 1880 – Bluefin driftfish – Dérivant gélatineux

Family Tetragonuridae

Tetragonurus cuvieri Risso, 1810 – Smalleye squaretail – Tétragonure de Cuvier

Family Stromateidae

Stromateus fiatola Linnaeus, 1758 – Blue butterflyfish – Fiatole

Family Caproidae

Antigonia capros Lowe, 1843 – Deepbody boarfish – Sanglier chevrette

Capros aper (Linnaeus, 1758) – Boarfish – Sanglier

Order PLEURONECTIFORMES

Family Citharidae

Citharus linguatula (Linnaeus, 1758) – Spotted flounder – Feuille

Family Scophthalmidae

Lepidorhombus boscii (Risso, 1810) – Four-spot megrim – Cardine à quatre taches

Lepidorhombus whiffiagonis (Walbaum, 1792) – Megrim – Cardine franche

Phrynorhombus norvegicus (Günther, 1862) – Norwegian topknot – Targie naine

Scophthalmus maximus (Linnaeus, 1758) – Turbot – Turbot

Scophthalmus rhombus (Linnaeus, 1758) – Brill – Barbue

Zeugopterus punctatus (Bloch, 1787) – Topknot – Targeur

Zeugopterus regius (Bonnaterre, 1788) – Eckström's topknot – Targie unimaculée

Family Bothidae

- Arnoglossus imperialis* (Rafinesque, 1810) – Imperial scaldfish – Arnoglosse impérial
Arnoglossus kessleri Schmidt, 1915 – Scaldback – Arnoglosse de Kessler
Arnoglossus laterna (Walbaum, 1792) – Scaldfish – Arnoglosse lanterne
Arnoglossus rueppelii (Cocco, 1844) – Rüppell’s scaldback – Arnoglosse de Rüppell
Arnoglossus thori Kyle, 1913 – Thor’s scaldfish – Arnoglosse de Thor
Bothus podas (Delaroché, 1809) – Wide-eyed flounder – Rombou podas

Family Pleuronectidae

- Glyptocephalus cynoglossus* (Linnaeus, 1758) – Witch flounder – Plie cynoglosse
Hippoglossoides platessoides (Fabricius, 1780) – American plaice – Balai
Hippoglossus hippoglossus (Linnaeus, 1758) – Atlantic halibut – Flétan de l’Atlantique
Limanda limanda (Linnaeus, 1758) – Common dab – Limande
Microstomus kitt (Walbaum, 1792) – Lemon sole – Limande-sole
Platichthys flesus (Linnaeus, 1758) – European flounder – Flet d’Europe
Pleuronectes platessa Linnaeus, 1758 – European plaice – Plie d’Europe

Family Soleidae

- Bathysolea profundicola* (Vaillant, 1888) – Deepwater sole – Sole de profondeur
Buglossidium luteum (Risso, 1810) – Solenette – Petite sole jaune
Dicologlossa cuneata (Moreau, 1881) – Wedge sole – Céteau
Microchirus azevia (de Brito Capello, 1867) – Bastard sole – Sole-perdrix brune
Microchirus hexophthalmus (Bennett, 1831) – Ocellated wedge sole – Sole-perdrix à six yeux
Microchirus ocellatus (Linnaeus, 1758) – Foureyed sole – Sole-perdrix ocellée
Microchirus variegatus (Donovan, 1808) – Thickback sole – Sole-perdrix commune
Monochirus hispidus Rafinesque, 1814 – Whiskered sole – Sole velue
Pegusa impar (Bennett, 1831) – Adriatic sole – Sole-pole de Méditerranée
Pegusa lascaris (Risso, 1810) – Sand sole – Sole-pole
Pegusa nasuta (Pallas, 1814) – Blackhand sole – Sole-pole sombre
Solea senegalensis Kaup, 1858 – Senegalese sole – Sole du Sénégal

Solea solea (Linnaeus, 1758) – Common sole – Sole commune

Synapturichthys kleinii (Risso, 1827) – Klein’s sole – Sole tachetée

Family Cynoglossidae

- Symphurus ligulatus* (Cocco, 1844) – Elongate tonguesole – Plagusie longue
Symphurus nigrescens Rafinesque, 1810 – Spotted tonguesole – Plagusie sombre

Order TETRAODONTIFORMES**Family Balistidae**

Balistes capriscus Gmelin, 1789 – Grey triggerfish – Baliste cabri

Family Monacanthidae

**Aluterus monoceros* (Linnaeus, 1758) – Unicorn leatherjacket – Bourse loulou

Family Tetraodontidae

- Lagocephalus lagocephalus* (Linnaeus, 1758) – Oceanic puffer – Compère océanique
Sphoeroides pachygaster (Müller & Troschel, 1848) – Blunthead puffer – Compère émoussé

Family Molidae

- Mola mola* (Linnaeus, 1758) – Ocean sunfish – Poisson-lune
Ranzania laevis (Pennant, 1776) – Slender sunfish – Poisson-lune tronqué

Note: The fish classification is being revised on the light of several recent works and re-assessments. Catalog of Fishes has adopted a new one in its last online version dated 1st November 2017 at a time when the paper was already accepted. We recommend to the users of this list to be cautious when referring to the classification we used in this paper. However new changes will be progressively integrated in the list available from the INPN website.

Acknowledgements. – We would like to thank the INPN for funding and the SFI for supervising the project. We are indebted to several persons who helped us during the course of the study, especially Salomé Fabri-Ruiz, Maria Mateo-Santos, Pierre Noël and Charles Muñoz-Nate.

REFERENCES

- ESCHMEYER W.N., FRICKE R. & VAN DER LAAN R. (eds), 2017. - Catalog of Fishes: Genera, species, references. (<http://researcharchive.calacademy.org/research/ichthyology/catalog/fishcatmain.asp>). Electronic version accessed 22 Mar. 2017.
 FROESE R. & PAULY D. (eds), 2017. - FishBase. World Wide Web electronic publication. www.fishbase.org, version Feb. 2017.
 GARGOMINY O., TERCERIE S., RÉGNIER C., RAMAGE T., SCHOELINCK C., DUPONT P., VANDEL E., DASZKIEWICZ P. & PONCET L., 2016. - TAXREF v10.0, référentiel taxonomique pour la France : méthodologie, mise en œuvre et

- diffusion. Rapport SPN 2016-101. Paris: MNHN. <https://inpn.mnhn.fr/programme/referentiel-taxonomique-taxref>
- GERVAIS H. & BOULART R., 1876-1877. - Les poissons : Synonymie, Description, Mœurs, Frai, Pêche, Iconographie, des Espèces composant plus particulièrement la Faune française. 2 parties en 3 volumes, 232 p., 300 p., 292 p., 260 pl. Paris: J. Rothschild.
- HUREAU J.C. & MONOD T. (eds), 1973-1979. - Check-List of the Fishes of the North-Eastern Atlantic and of the Mediterranean (CLOFNAM I and II). 2 vol. Paris: UNESCO.
- KEITH P., PERSAT H., FEUNTEUN É. & ALLARDI J. (Coord.), 2011. - Les Poissons d'Eau douce de France. Collection Inventaires et Biodiversité. 552 p. Mèze & Paris: Biotope - Muséum national d'Histoire naturelle.
- LOUISY P., 2015. - Europe and Mediterranean Marine Fish Identification Guide. 512 p. Paris: Les Éditions Ulmer.
- MOREAU E., 1881. - Histoire naturelle des Poissons de la France. 3 vol., 478 p., 572 p., 697 p. Paris: Masson.
- QUÉRO J.C., DU BUIT H., LABORDE J.L. & VAYNE J.J., 2000. - Observations ichthyologiques effectuées en 1999. *Ann. Soc. Sci. Nat. Charente-Mar.*, 8(9): 1039-1045.
- QUÉRO J.C., PORCHÉ P. & VAYNE J.J., 2003. - Guide des Poissons de l'Atlantique européen. 465 p. Les Guides du naturaliste. Lonay & Paris: Delachaux et Niestlé.
- TRENKEL V., BERTHELE O., LORANCE P. *et al.* [14 authors], 2009. - Atlas des grands Invertébrés et Poissons observés par les Campagnes scientifiques. Atlas de distribution. Bilan 2008. 100 p. Nantes: Ifremer.
- UNITED NATIONS, 1992. - Convention on biological Diversity. Rio-de-Janeiro, 22 May 1992, 28 p. <https://www.cbd.int/doc/legal/cbd-en.pdf>
- VAN DER LAAN R., ESCHMEYER W.N. & FRICKE R., 2017. - Family-group names. (<http://www.calacademy.org/scientists/catalog-of-fishes-family-group-names/>). Electronic version accessed 22 Mar. 2017.
- VAN DER LAND J., COSTELLO M.J., ZAVODNIK D., SANTOS R.S., PORTEIRO F.M., BAILLY N., ESCHMEYER W.N. & FROESE R., 2001. - Pisces. *In*: European Register of Marine Species. A check-list of the marine species in Europe and a bibliography of guides to their identification (Costello M.J., Emblow C.S. & White R., eds), Patrimoines naturels, 50: 357-374. Paris: MNHN.
- WHITEHEAD P.J.P., BAUCHOT M.L., HUREAU J.C., NIELSEN J. & TORTONESE E. (eds), 1984-1986. - Fishes of the North-eastern Atlantic and the Mediterranean. 3 vol. Paris: UNESCO.

Annex. – Complementary list of brackish and freshwater species that only enter sporadically the marine biota. Non-native species are indicated with an asterisk (*)

CLASS ACTINOPTERYGII

Order ACIPENSERIFORMES

Family Acipenseridae

- **Acipenser baerii* Brandt, 1869 – Siberian sturgeon – Esturgeon de Sibérie
- **Acipenser ruthenus* Linnaeus, 1758 – Sterlet sturgeon – Sterlet

Order SALMONIFORMES

Family Salmonidae

- **Oncorhynchus kisutch* (Walbaum, 1792)⁸ – Coho salmon – Saumon argenté
- **Oncorhynchus mykiss* (Walbaum, 1792) – Rainbow trout – Truite arc-en-ciel

⁸ Was introduced for aquaculture, but the recorded escapees did not establish a population.

Order CYPRINODONTIFORMES

Family Cyprinodontidae

- Aphanius fasciatus* (Valenciennes, 1821) – Mediterranean banded pupfish – Aphanius de Corse
- Aphanius iberus* (Valenciennes, 1846)⁹ – Spanish pupfish – Aphanius d'Espagne

Family Poeciliidae

- **Gambusia holbrooki* Girard, 1859 – Eastern mosquitofish – Gambusie de Holbrook

Order GASTEROSTEIFORMES

Family Gasterosteidae

- Pungitius laevis* (Cuvier, 1829) – Smoothtail ninespine stickleback – Épinochette à peau douce

Some primarily freshwater species are sometimes cited geographically from “marine” environment. However, it is often by accident (fishes washed out by a flood, and found at sea in the plume of freshwater at the surface), or in very restricted areas under the strong influence of a freshwater source. We did not include those in this list.

⁹ Most probably extinct in France.

